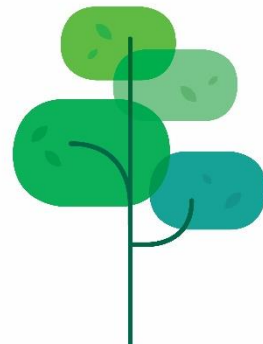


# COVID-19 Vaccination Programme: UPDATE

Clare Teeney

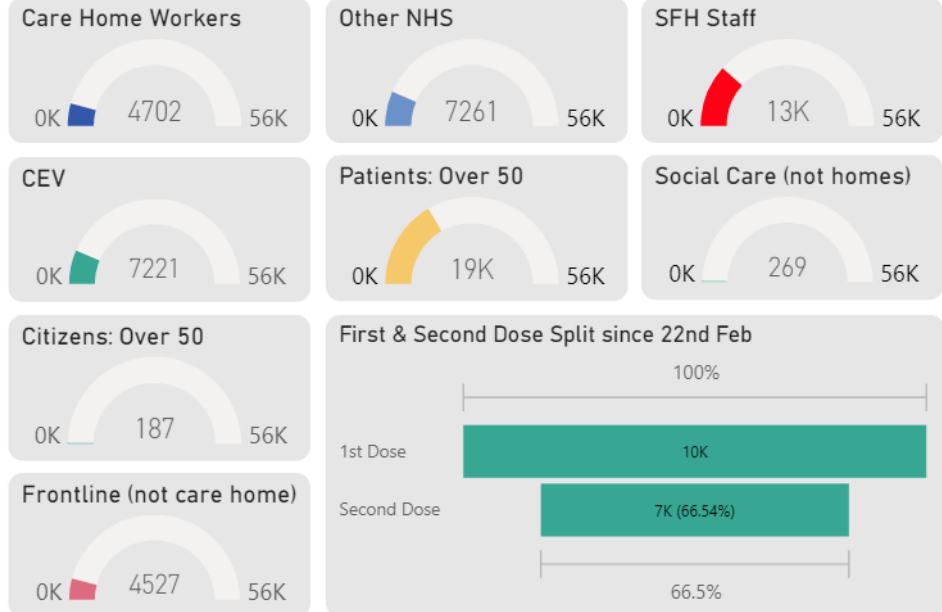
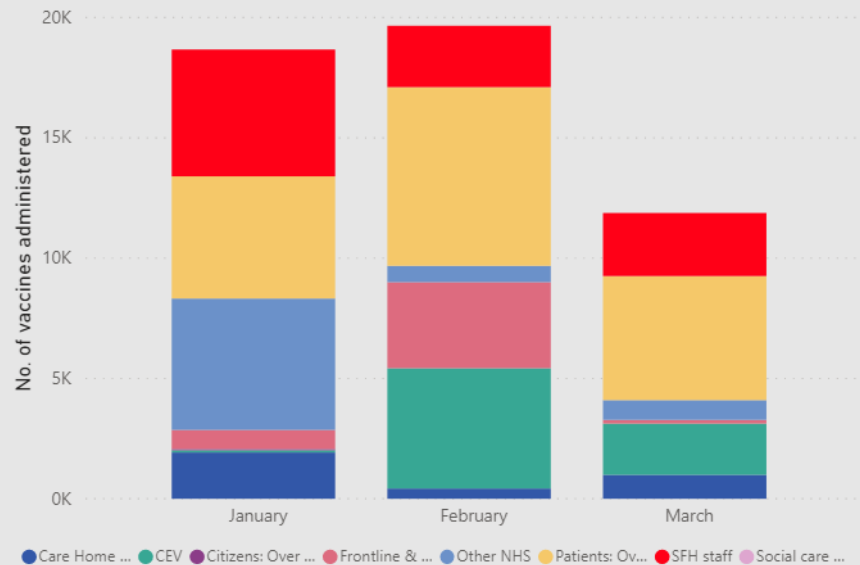
Executive Director of People



# Performance to date (8<sup>th</sup> Dec – 23<sup>rd</sup> March)



Monthly Administration of Vaccine by Cohort

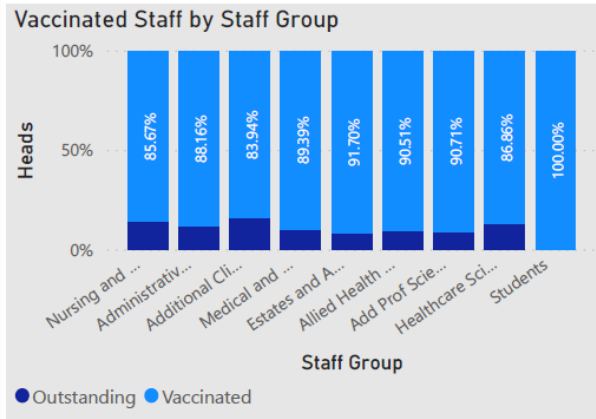
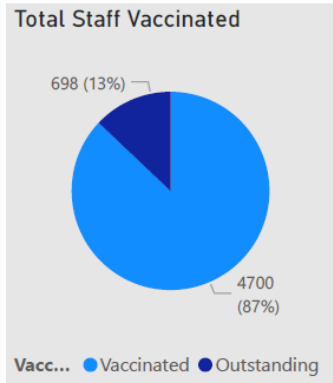
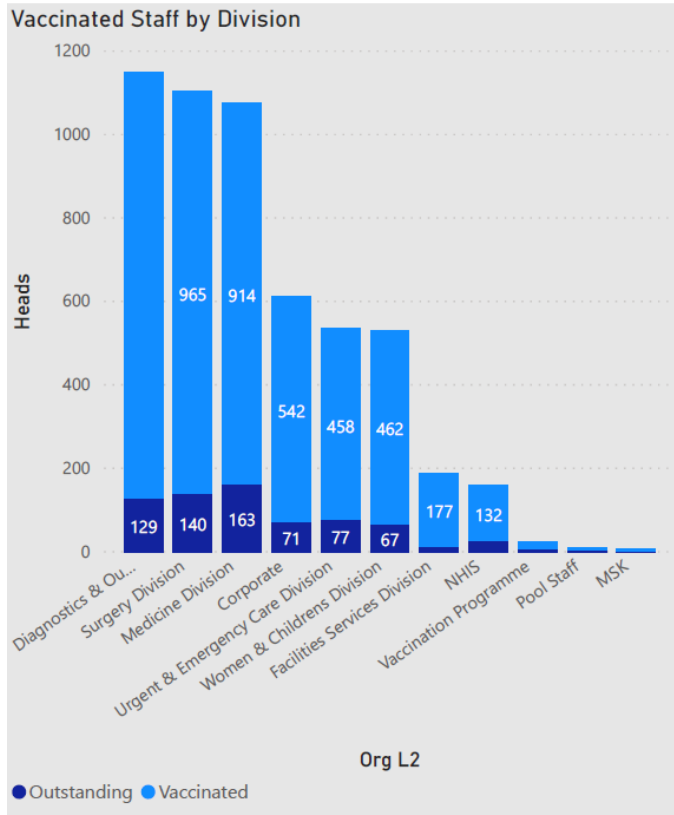


# SFH workforce vaccination (Substantive)

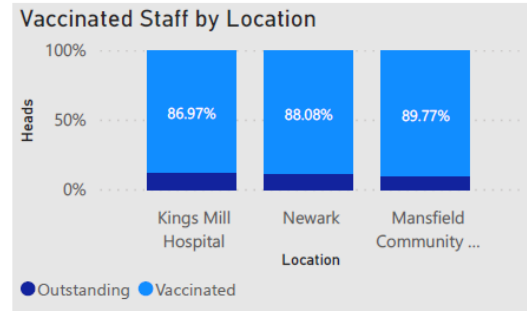
Sherwood Forest Hospitals NHS Foundation Trust  
COVID 19 Vaccination Programme  
**ALL TRUST - (Exc Bank Staff)**

22 March 2021  
Report Date

Total Staff	Total Staff Outstanding	Total Staff Vaccinated
<b>5398</b>	<b>698</b>	<b>4700</b>
All BME Staff	All BME Staff Outstanding	All BME Staff Vaccinated
<b>667</b>	<b>123</b>	<b>544</b>
All Shielded Staff	All Shielded Staff Outstanding	All Shielded Staff Vaccinated
<b>56</b>	<b>8</b>	<b>48</b>
Staff Over 60	Staff Over 60 Outstanding	Staff over 60 Vaccinated
<b>412</b>	<b>12</b>	<b>400</b>



1st Dose	2nd Dose
<b>4700</b>	<b>2153</b>



**Note:**

The data on these dashboard only shows those staff vaccinated that are on the Electronic Staff Record and who are recorded on Swiftqueue and NIMS, with traceable NHS Numbers

# SFH workforce vaccination (Front Line Workers)

Sherwood Forest Hospitals NHS Foundation Trust  
COVID 19 Vaccination Programme  
**FRONT LINE WORKERS- (Inc Bank Staff)**

22 March 2021  
Report Date

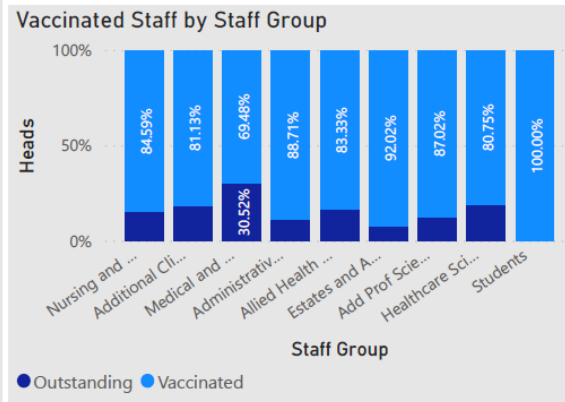
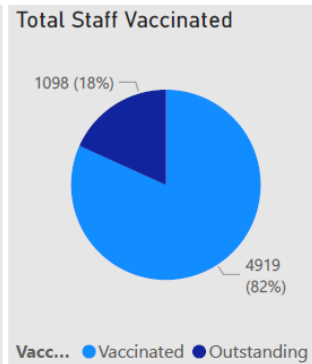
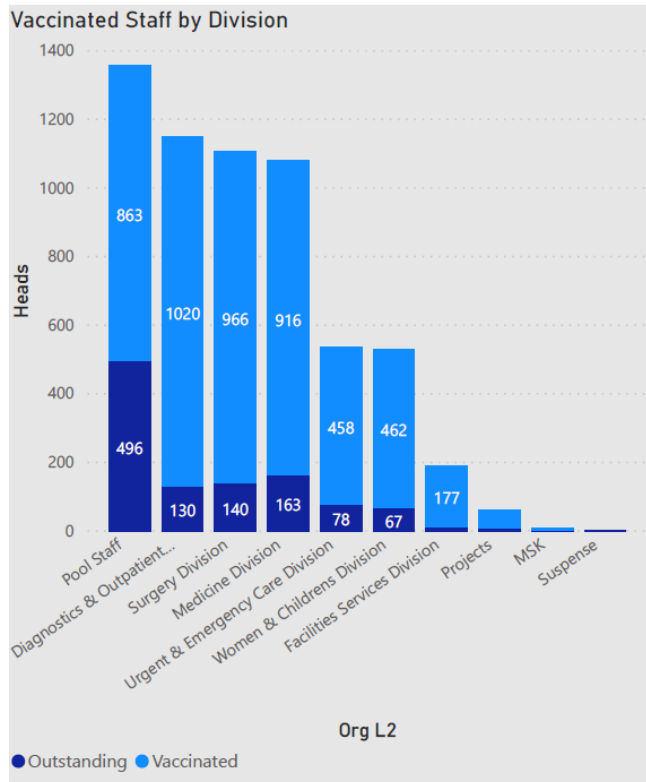
Total Staff	Total Staff Outstanding	Total Staff Vaccinated
<b>6017</b>	<b>1098</b>	<b>4919</b>

All BME Staff	All BME Staff Outstanding	All BME Staff Vaccinated
<b>885</b>	<b>188</b>	<b>697</b>

All Shielded Staff	All Shielded Staff Outstanding	All Shielded Staff Vaccinated
<b>55</b>	<b>8</b>	<b>47</b>

Staff Over 60	Staff Over 60 Outstanding	Staff over 60 Vaccinated
<b>441</b>	<b>30</b>	<b>411</b>

1st Dose	2nd Dose
<b>4919</b>	<b>2125</b>



Note:

The data within the above analysis only identifies Front Line workers and excludes Non Front Line workers.

A difference between the other dashboards and this analysis will be noted.

**Note:**

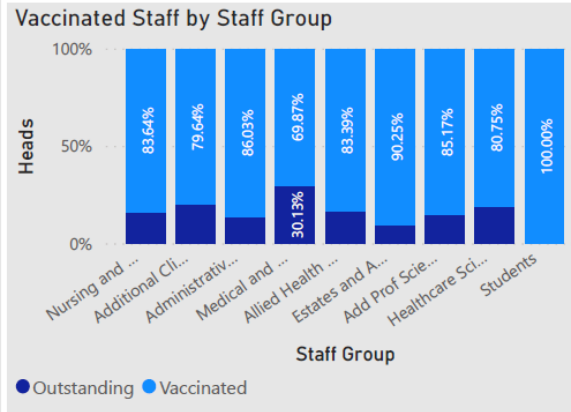
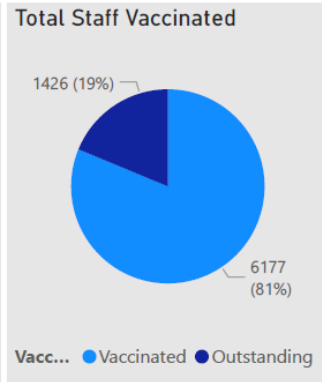
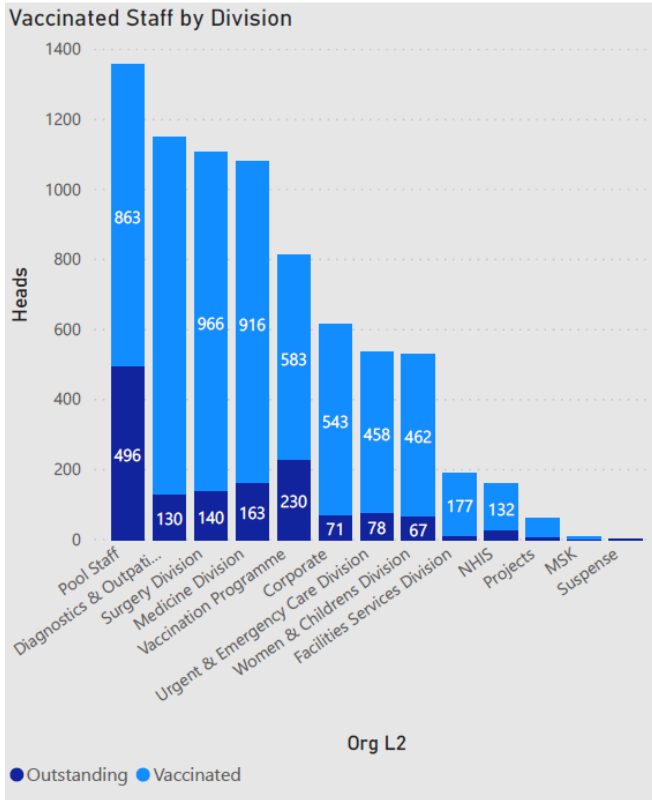
The data on these dashboard only shows those staff vaccinated that are on the Electronic Staff Record and who are recorded on Swiftqueue and NIMs, with traceable NHS Numbers

# SFH workforce vaccination (All)

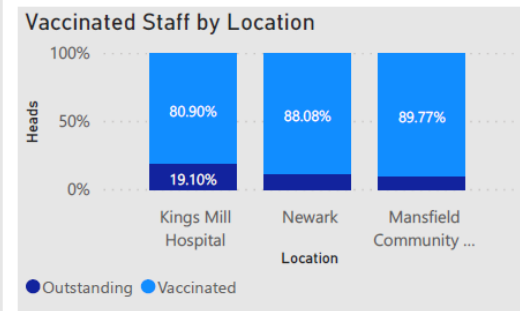
Sherwood Forest Hospitals NHS Foundation Trust  
COVID 19 Vaccination Programme  
**ALL TRUST - (Inc Bank Staff)**

22 March 2021  
Report Date

<b>Total Staff</b>	<b>7603</b>	<b>Total Staff Outstanding</b>	<b>1426</b>	<b>Total Staff Vaccinated</b>	<b>6177</b>
<b>All BME Staff</b>	<b>937</b>	<b>All BME Staff Outstanding</b>	<b>197</b>	<b>All BME Staff Vaccinated</b>	<b>740</b>
<b>All Shielded Staff</b>	<b>56</b>	<b>All Shielded Staff Outstanding</b>	<b>8</b>	<b>All Shielded Staff Vaccinated</b>	<b>48</b>
<b>Staff Over 60</b>	<b>560</b>	<b>Staff Over 60 Outstanding</b>	<b>50</b>	<b>Staff over 60 Vaccinated</b>	<b>510</b>



<b>1st Dose</b>	<b>6177</b>	<b>2nd Dose</b>	<b>2519</b>
-----------------	-------------	-----------------	-------------



**Note:** The data on these dashboard only shows those staff vaccinated that are on the Electronic Staff Record and who are recorded on Swiftqueue and NIMs, with traceable NHS Numbers