

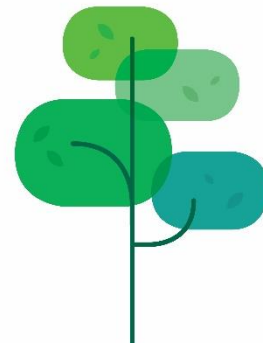
Programme Assurance Report

June 2022

COVID 19 Vaccination Programme Sherwood Forest Hospital Hub

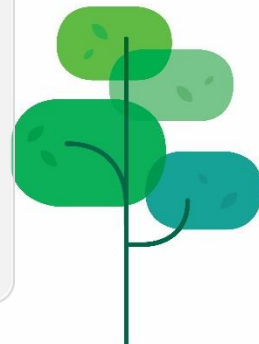
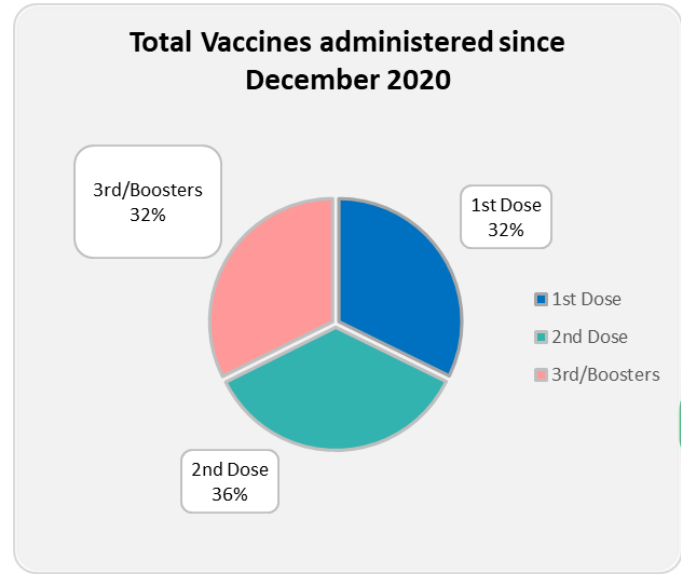
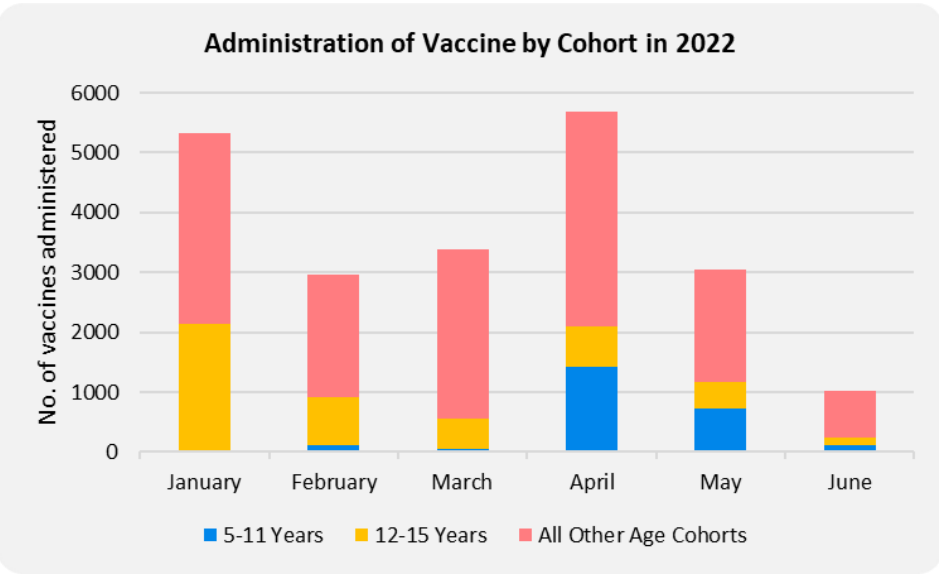
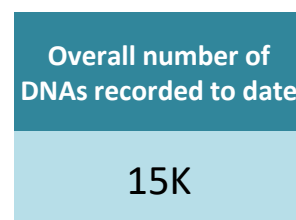
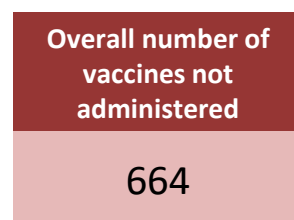
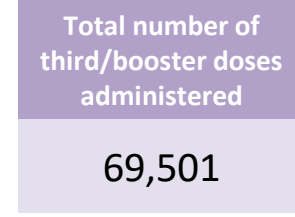
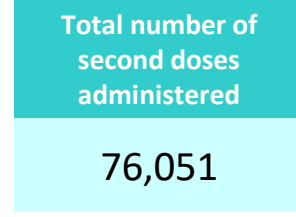
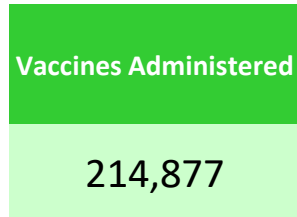
Inspected and rated

Good



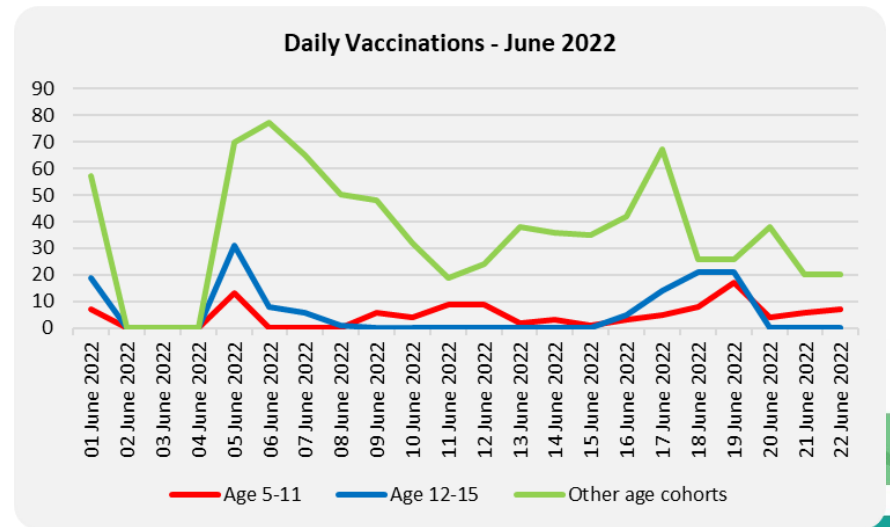
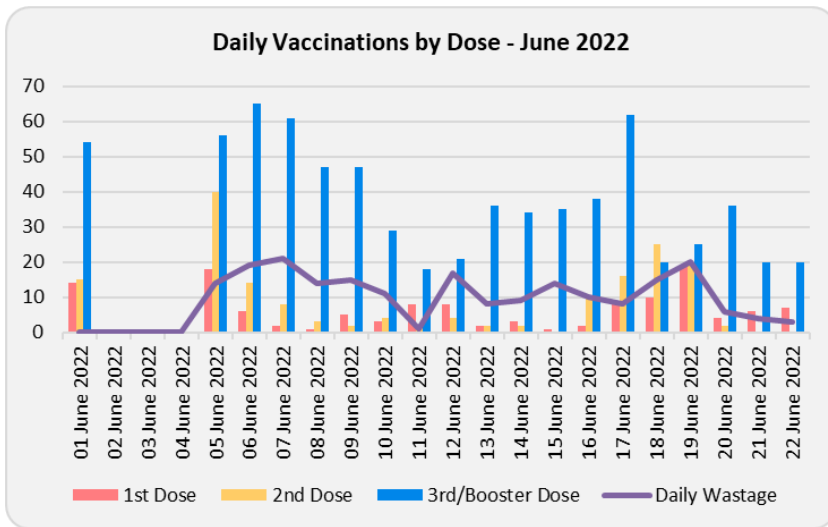
Performance to date

(8th December 2020 – 22nd June 2022)



Monthly performance (June 2022)

Total Vaccines Administered to date	Vaccines Administered this month	Overall number of vaccines not given this month	DNAs recorded during this month	Total waste recorded this month
214,877	1,020	10	57	209



Staff Vaccination Programme

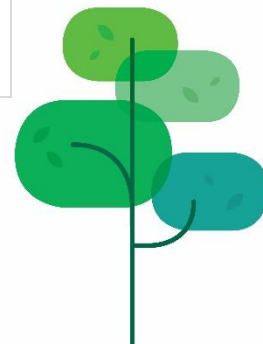
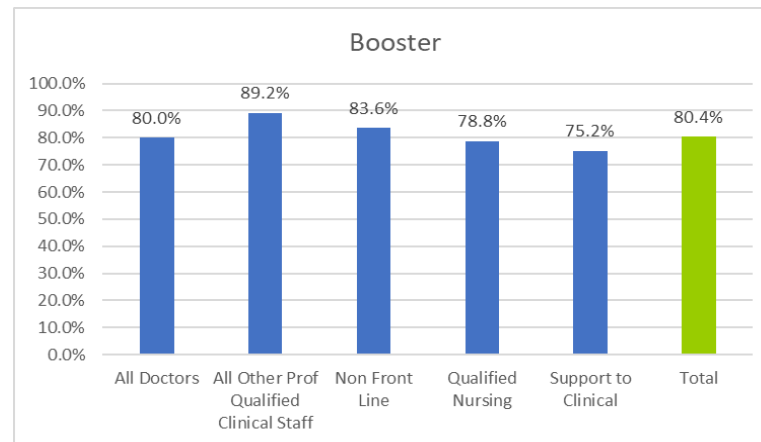
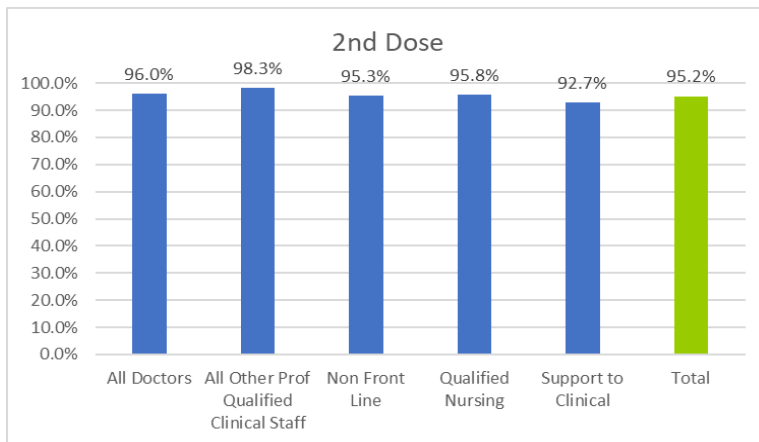


Sherwood Forest Hospitals
NHS Foundation Trust

COVID Vaccination – The charts below represent our vaccination levels, however these show a position as at February 2022. This gap in reporting is due to the national removal of the National Immunisation Reporting service (NIMs), that we used for all vaccination reporting. All Trusts were encouraged to record on and report on this system.

The removal was due to concerns around information governance and was a national decision. We have subsequently appealed and attempted to gain access, however this is still under review with no national decision taken as yet.

To mitigate against this we will be recording and reporting using the newly implemented OPAS Occupational Health system, we are now using within the Trust and are discussing how we upload our data into OPAS and then the mechanisms to keep this updated. We will be working on this during Q2 with an ambition to get recording during Q2.



Covid Vaccination Update June 2022 – Spring Booster Update



Sherwood Forest Hospitals
NHS Foundation Trust

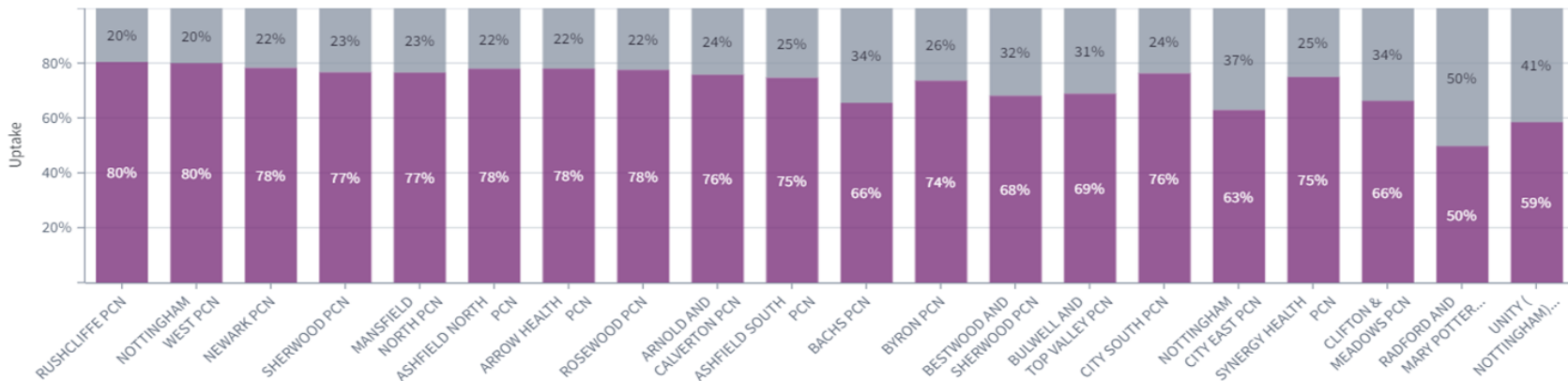
Eligible
Spring Booster

96,412
73,047

Uptake 75.8%
Planned Uptake 85%

Uptake by practice PCN

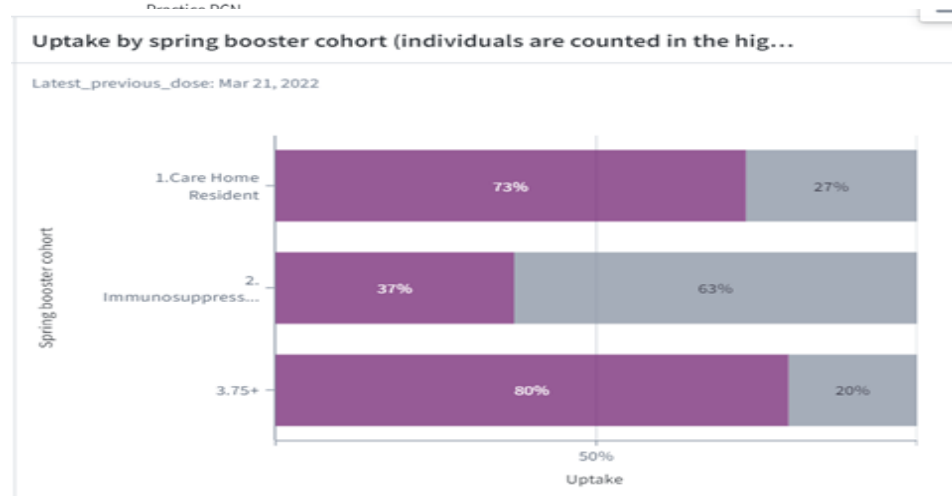
Latest_previous_dose: Mar 21, 2022



The Spring Booster campaign commenced on 21st March 2022 and invited the following cohorts:

- aged 75 and over
- live in a care home for older people
- aged 12 and over and have a weakened immune system

Nationally the spring booster vaccine is Moderna.



Covid Vaccination Programme June 2022 Update

Following review of current ICS delivery model, the Summer Plan includes:

- 2 Vaccination Centres
- 2 Hospital Hubs
- 4 PCNs
- 11 Community Pharmacies (all to be assured for 5-11 year olds)
- 14 Community Pharmacies have paused

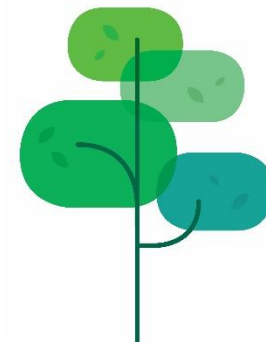
Pillar	Plan	Reported	Reported as % against Plan	Variance
Vaccination Centre	2,395	3,577	150%	1,182
Hospital Hub	1,492	1,456	97%	-36
PCN	3,555	2,254	64%	1,301
Community Pharmacy	5,485	5,702	104%	217
Total	12,927	12,989	104%	2,664

As with the 2021 autumn COVID-19 booster programme, the primary objective of the 2022 autumn booster programme will be to augment population immunity and protection against severe COVID-19 disease, specifically hospitalisation and death, over winter 2022 to 2023.

The JCVI's current view is that in autumn 2022, a COVID-19 vaccine should be offered to:

- Residents in a care home for older adults and staff working in care homes for older adults
- Frontline health and social care workers
- All those 65 years of age and over
- Adults aged 16 to 64 years in a clinical risk group.

Vaccination of other groups of people remains under consideration within JCVI's ongoing review.



“Lets Talk Vaccination – Health on the move” Supporting accessibility for local citizens

The Covid-19 vaccination programme in Nottingham and Nottinghamshire are using different approaches to help make it as easy as possible for people to receive the Covid-19 vaccine to address inequalities; “Lets Talk Vaccination – health on the move”.

A number of additional initiatives over the past month have include:

- Further joint sanctuary and Medivan sessions have taken place with additional focus to supporting homeless centres include Making Every Contact Count (MECC) with public health information and signposting further engagement on-going with County and City community NHS homeless outreach teams
- On-going approaches in place addressing vaccine update gaps with African and African Caribbean community, LD and SMI cohorts, Eastern European
- Sanctuary staff have attended several venues / events and engaged with citizens in relation to the vaccine along with further wider engagement and promotion
- Introduction of a new Gypsy, Roma, Traveller group being established

