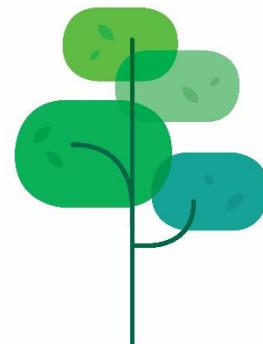


# 2023-24 Operational Planning Guidance Update

SFH Board 2nd February 2023



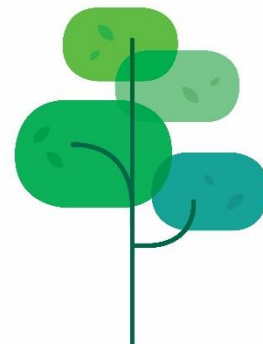
# 2023-24 Operational Planning



Sherwood Forest Hospitals  
NHS Foundation Trust

- On 23<sup>rd</sup> December 2022, NHS England (NHSE) released its 2023-24 priorities and operational planning guidance with associated technical guidance published early January 2023.
- The guidance is shorter than 2022-23 with fewer targets, a greater emphasis on outcomes and less prescription on how to achieve them. It signals a new relationship between the service and the centre in the future, which empowers local leaders.
- NHSE simultaneously published guidance on developing the Joint Forward Plan (JFP).
- ICBs are asked to work with system partners to develop plans to meet the objectives set out in the operational planning guidance before the end of March 2023 (and JFP by the end of June 2023).
- Further guidance, which is fundamental for detailed operational planning, is still to be published
  - NHSE recovery plans for Urgent and Emergency Care (UEC) and General Practice Access.
  - NHSE single Maternity Delivery Plan.
  - NHSE elective recovery technical guidance and commissioner/Trust level targets supported by a 'pay per unit' model.

Technical guidance published 12<sup>th</sup> January 2023 set out the requirement for a **Draft ICS plan submission Thursday 23<sup>rd</sup> February with final ICS plan submission 30<sup>th</sup> March** (SFH No longer submits its plan separately with Nottingham & Nottinghamshire NHS providers and the Integrated Care Board submitting a single consolidated ICS Plan)

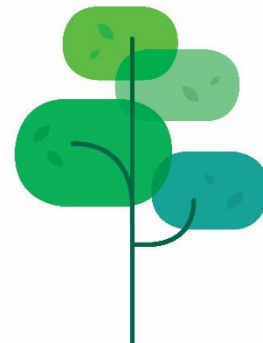


# 2023-24 Operational Planning

The 2023/24 priorities and operational planning guidance sets out three core priorities informed by three underlying principles:

1. Recovering our core services and improving productivity	2. Make progress in delivering the key NHS Long Term Plan ambitions	3. Continue transforming the NHS for the future
Smaller number of national objectives which matter most to the public and patients		
More empowered and accountable local systems		
NHSE guidance focused on the “why” and “what”, not the “how”		

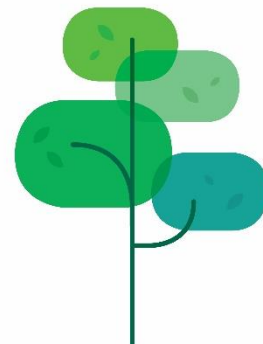
The guidance covers 12 areas and 32 national objectives against the first two priorities (see appendix).



# 2023-24 Operational Planning

## Headline ambitions

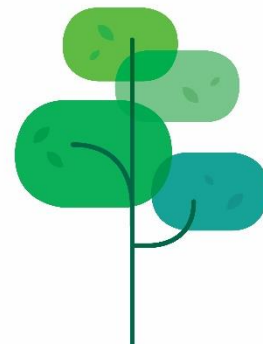
- **Recovering our core services and improving productivity including:**
  - Improve **ambulance** response and **A&E** waiting times.
  - Reduce **elective** long waits and **cancer** backlogs, and improve performance against the core **diagnostic** standard.
  - Make it easier for people to access primary care services, particularly **general practice**.
- Recovering **productivity** and improving **whole system flow** are critical to achieving these objectives
- We must collectively address the challenge of **staff retention and attendance**.
- Throughout all the above will be a focus on narrowing **health inequalities** in access, outcomes and experiences, and maintaining **quality and safety** in our services, particularly in **maternity** services.



# 2023-24 Operational Planning

## Headline ambitions

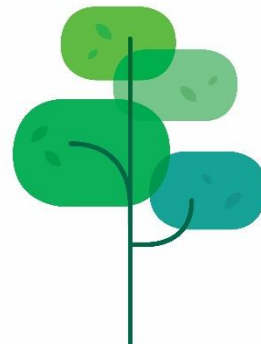
- **Delivering the key Long Term Plan ambitions and transforming the NHS including:**
  - Improve **mental health** services and services for people with a learning disability and autistic people.
  - Continue to support delivery of the **primary and secondary prevention** priorities and the effective management of long-term conditions.
  - Ensure that the **workforce** is put on a sustainable footing for the long term, including publication of a NHS Long Term Workforce Plan.
  - Level up **digital infrastructure** and drive greater connectivity, including development of the NHS App to help patients to identify their needs and get the right care in the right setting.
- **Local empowerment and accountability**
  - ICSs are best placed to understand population needs and are expected to agree **specific local objectives** that complement the national NHS objectives.
  - As set out in **Operating Framework**, NHS England will continue to support the local NHS [integrated care boards (ICBs) and providers] to deliver their objectives and publish information on progress against the key objectives set out in the NHS Long Term Plan.



# 2023-24 Operational Planning

## Appendix:

- Table setting out the 12 areas and 32 national objectives set out in the 2023-24 priorities and operational planning guidance
- Useful links

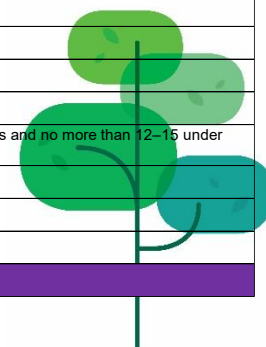


# 2023-24 Operational Planning

Table summarising the 12 areas and 32 national objectives set out within the NHSE 2023/24 priorities and operational planning guidance

Ref	Area	Objective	
1a	Urgent and emergency care*	Improve A&E waiting times so that no less than 76% of patients are seen within 4 hours by March 2024 with further improvement in 2024/25	
		Improve category 2 ambulance response times to an average of 30 minutes across 2023/24, with further improvement towards pre-pandemic levels in 2024/25	
		Reduce adult general and acute (G&A) bed occupancy to 92% or below	
	1b	Community health services	Consistently meet or exceed the 70% 2-hour urgent community response (UCR) standard
			Reduce unnecessary GP appointments and improve patient experience by streamlining direct access and setting up local pathways for direct referrals
	1c	Primary care*	Make it easier for people to contact a GP practice, including by supporting general practice to ensure that everyone who needs an appointment with their GP practice gets one within two weeks and those who contact their practice urgently are assessed the same or next day according to clinical need
			Continue on the trajectory to deliver 50 million more appointments in general practice by the end of March 2024
			Continue to recruit 26,000 Additional Roles Reimbursement Scheme (ARRS) roles by the end of March 2024
			Recover dental activity, improving units of dental activity (UDAs) towards pre-pandemic levels
	1d	Elective care	Eliminate waits of over 65 weeks for elective care by March 2024 (except where patients choose to wait longer or in specific specialties)
			Deliver the system- specific activity target (agreed through the operational planning process)
	1e	Cancer	Continue to reduce the number of patients waiting over 62 days
Meet the cancer faster diagnosis standard by March 2024 so that 75% of patients who have been urgently referred by their GP for suspected cancer are diagnosed or have cancer ruled out within 28 days			
Increase the percentage of cancers diagnosed at stages 1 and 2 in line with the 75% early diagnosis ambition by 2028			
1f	Diagnostics	Increase the percentage of patients that receive a diagnostic test within six weeks in line with the March 2025 ambition of 95%	
		Deliver diagnostic activity levels that support plans to address elective and cancer backlogs and the diagnostic waiting time ambition	
1g	Maternity*	Make progress towards the national safety ambition to reduce stillbirth, neonatal mortality, maternal mortality and serious intrapartum brain injury	
		Increase fill rates against funded establishment for maternity staff	
1h	Use of resources	Deliver a balanced net system financial position for 2023/24	
2d	Workforce	Improve retention and staff attendance through a systematic focus on all elements of the NHS People Promise	
2a	Mental health	Improve access to mental health support for children and young people in line with the national ambition for 345,000 additional individuals aged 0-25 accessing NHS funded services (compared to 2019)	
		Increase the number of adults and older adults accessing IAPT treatment	
		Achieve a 5% year on year increase in the number of adults and older adults supported by community mental health services	
		Work towards eliminating inappropriate adult acute out of area placements	
		Recover the dementia diagnosis rate to 66.7%	
		Improve access to perinatal mental health services	
2b	People with a learning disability and autistic people	Ensure 75% of people aged over 14 on GP learning disability registers receive an annual health check and health action plan by March 2024	
		Reduce reliance on inpatient care, while improving the quality of inpatient care, so that by March 2024 no more than 30 adults with a learning disability and/or who are autistic per million adults and no more than 12-15 under 18s with a learning disability and/or who are autistic per million under 18s are cared for in an inpatient unit	
2c	Prevention and health inequalities	Increase percentage of patients with hypertension treated to NICE guidance to 77% by March 2024	
		Increase the percentage of patients aged between 25 and 84 years with a CVD risk score greater than 20 percent on lipid lowering therapies to 60%	
		Continue to address health inequalities and deliver on the Core20PLUS5 approach	

Recovering our core services and improving productivity



\*ICBs and providers should review the UEC and general practice access recovery plans, and the single maternity delivery plan for further detail when published

# 2023-24 Operational Planning

## Useful Links

- NHSE Operational and Joint Forward Planning guidance is available at the following link: [NHS England » NHS operational planning and contracting guidance](#)
- The NHS Confederation has produced a very helpful summary of the 2023/24 planning guidance at the following link: [2023/24 NHS priorities and operational planning guidance | NHS Confederation](#)

