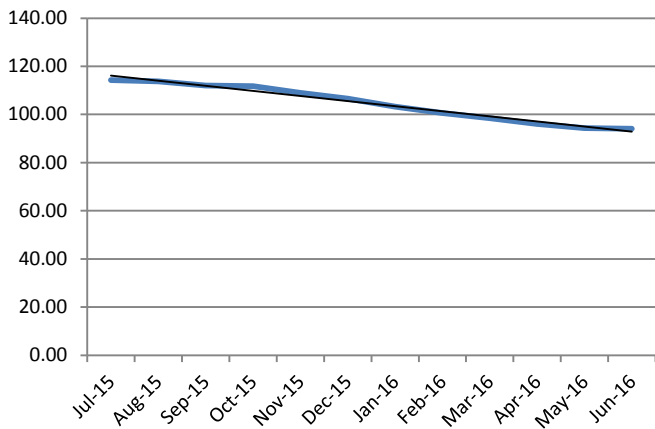
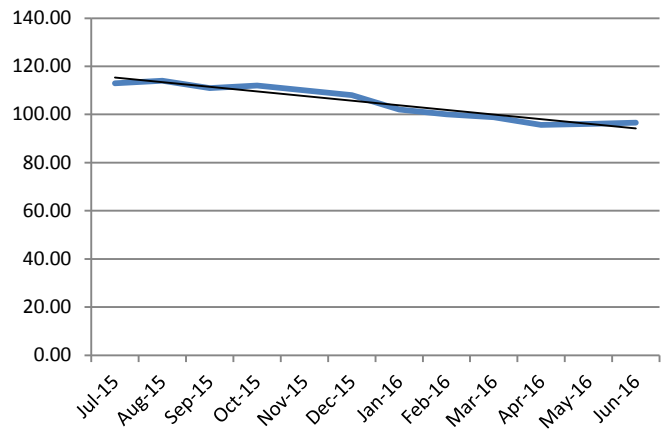


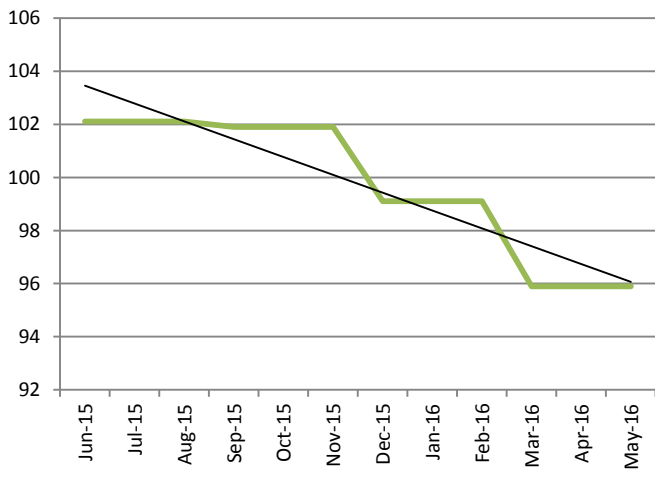
**Rolling 12 months HSMR
(basket of 56 diagnosis groups)**



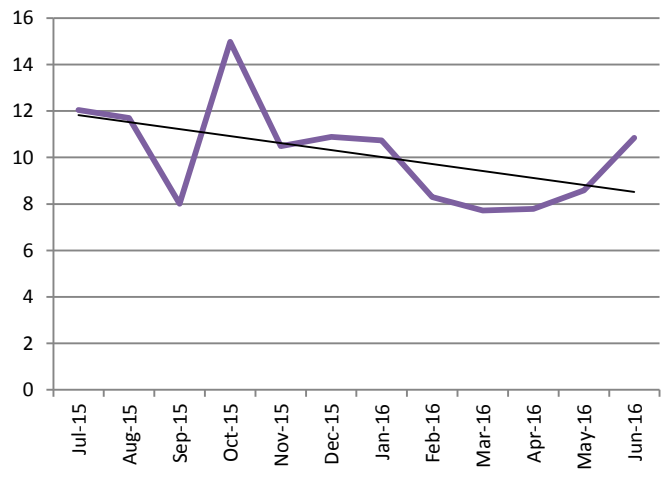
Rolling 12 months HSMR Weekend (basket of 56 diagnosis groups)



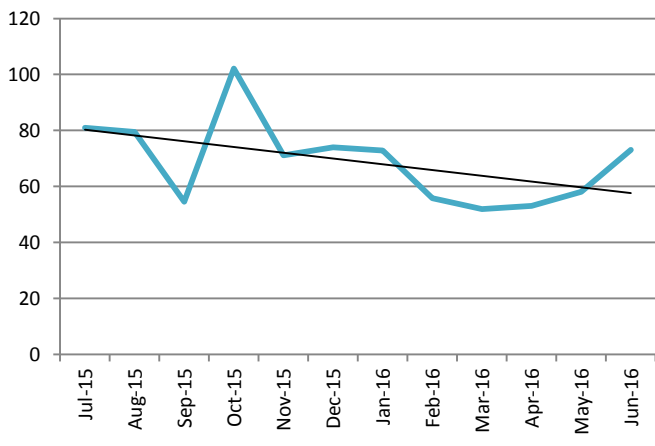
SHMI



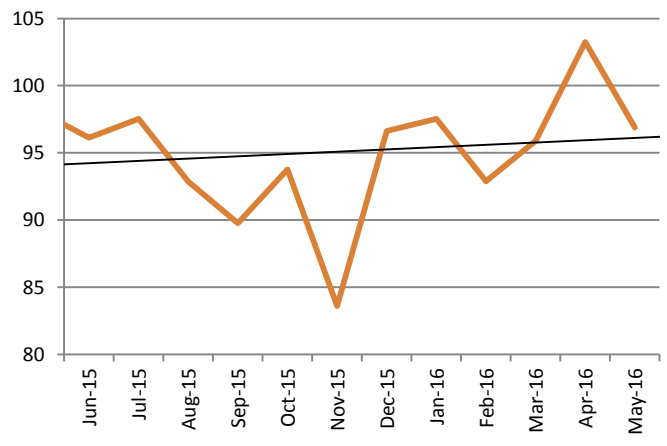
Emergency c-section rate (crude rate)

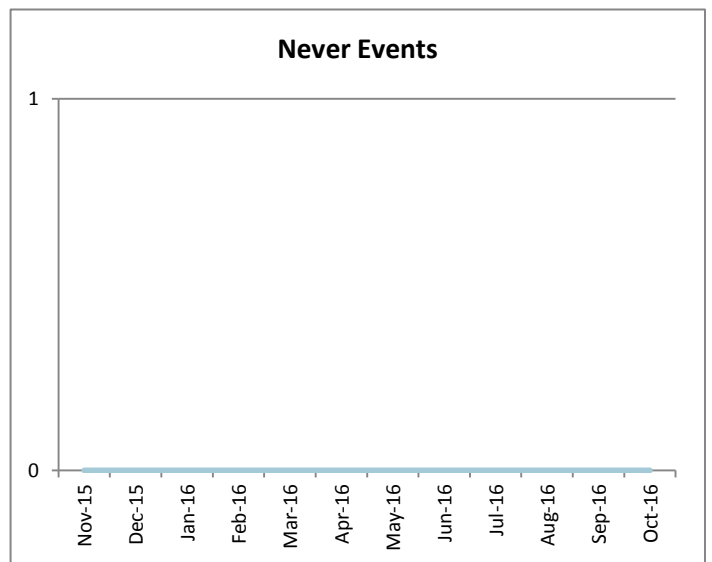
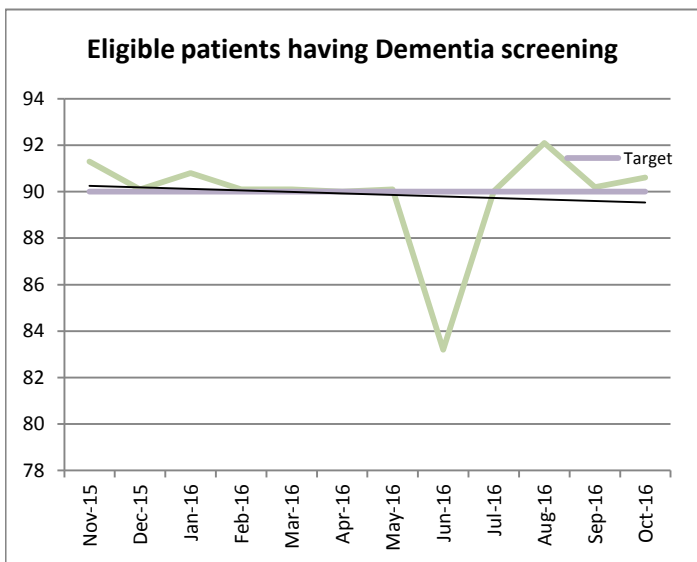
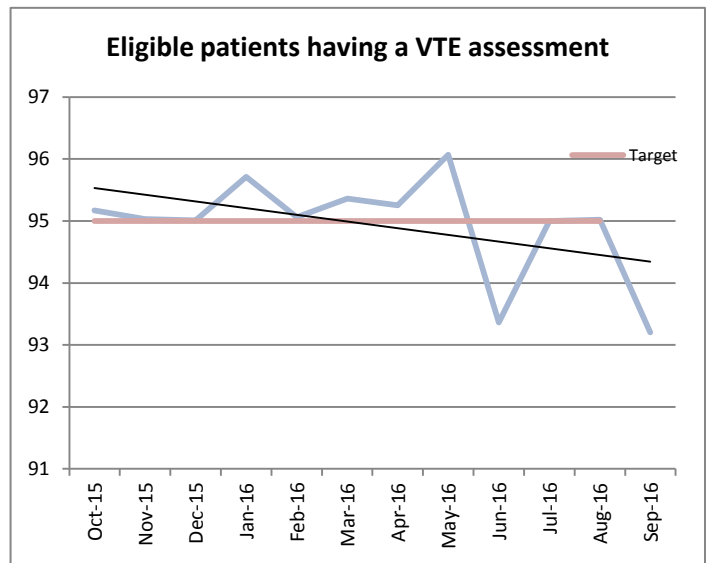
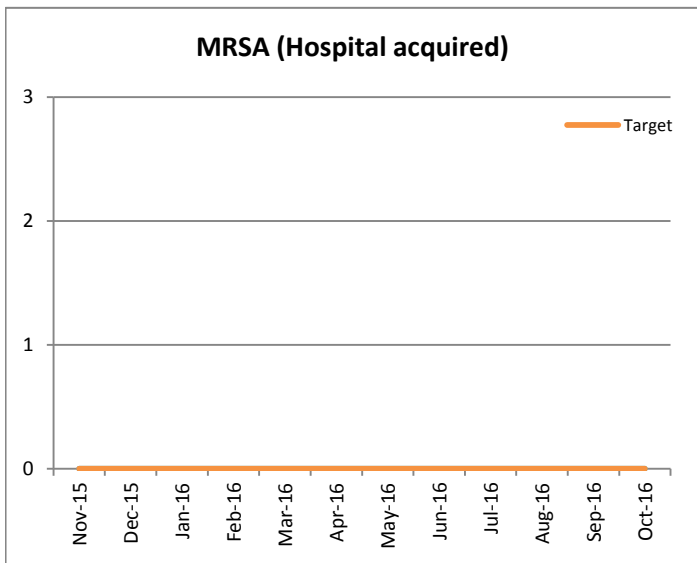
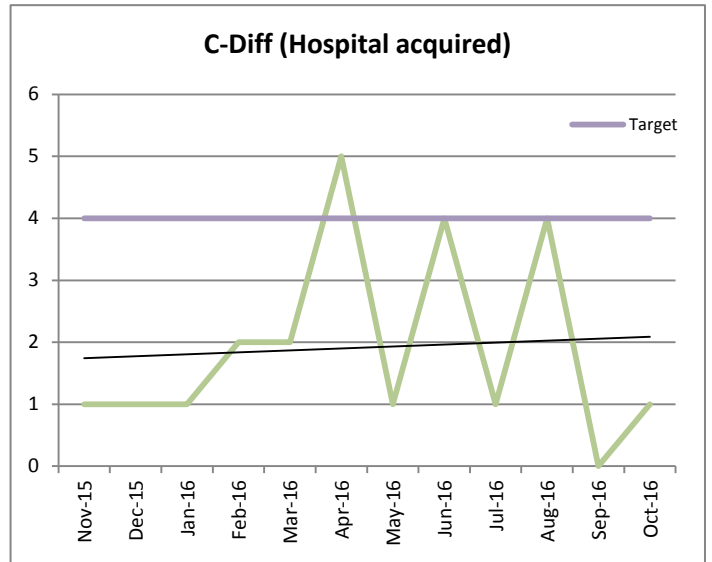
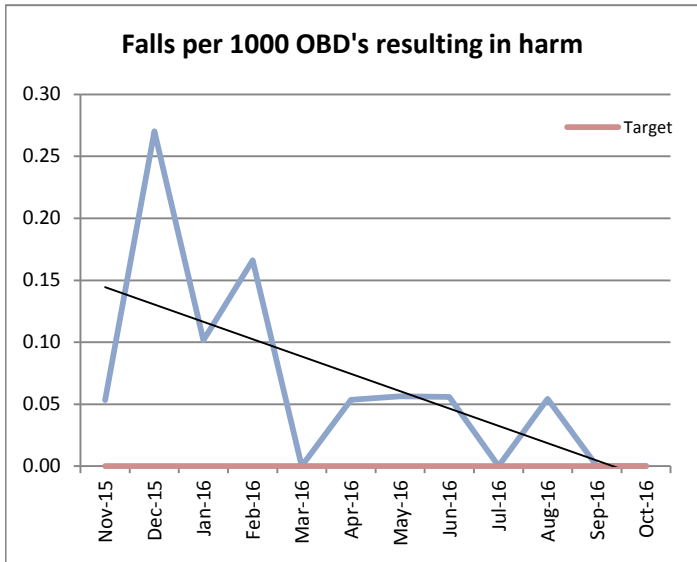


**Emergency c-section rate
(standardised ratio)**

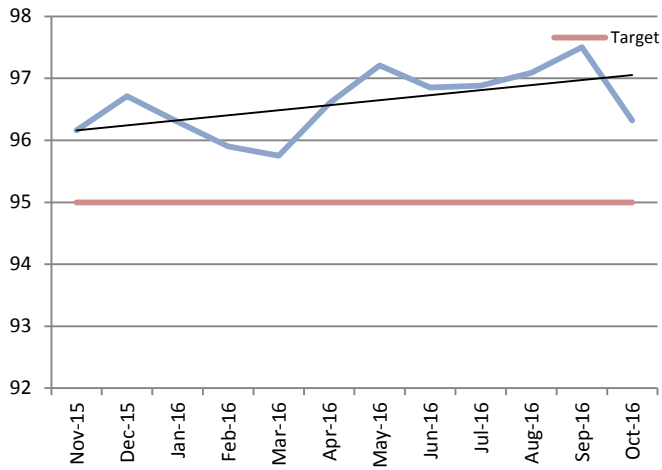


**Emergency re-admissions within 30 days
following an elective or emergency spell**

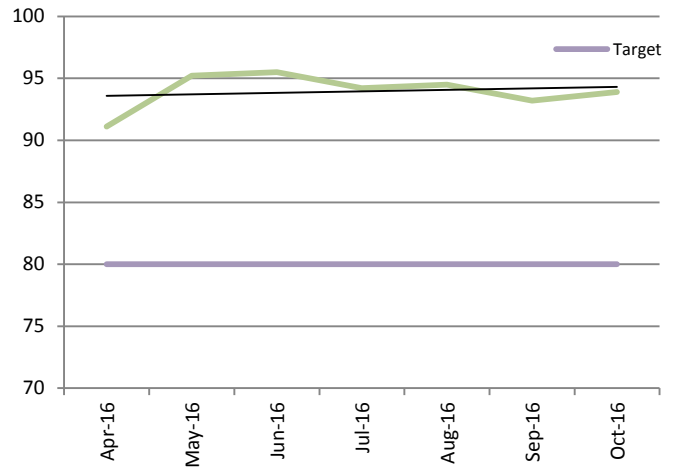




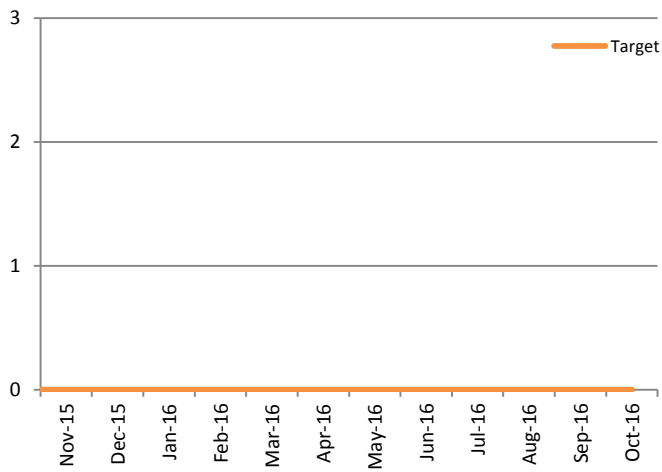
Harm-free SFH care



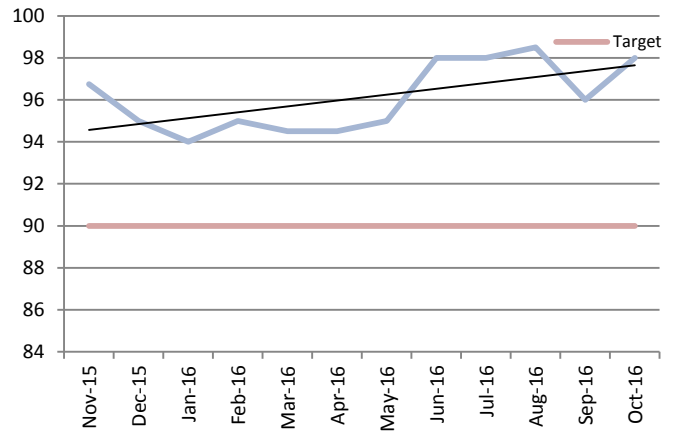
Safe Staffing levels



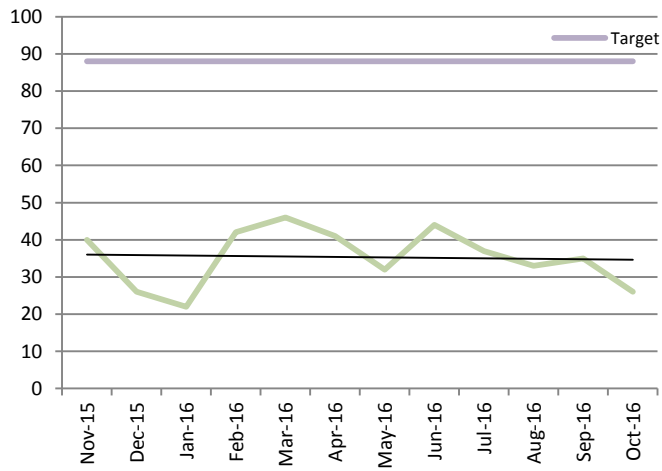
Same Sex Accommodation breaches



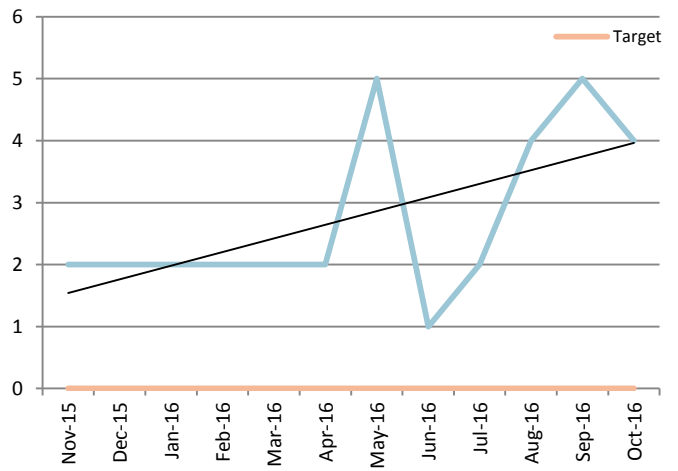
% Complaint responses dispatched within the appropriate number of days

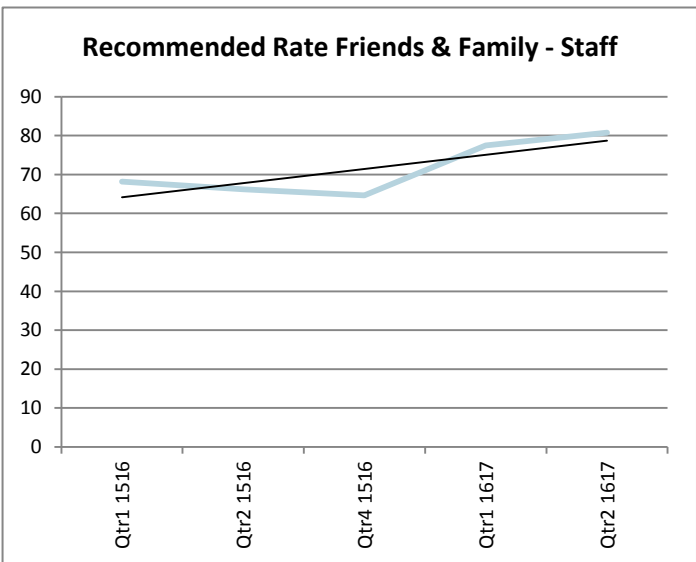
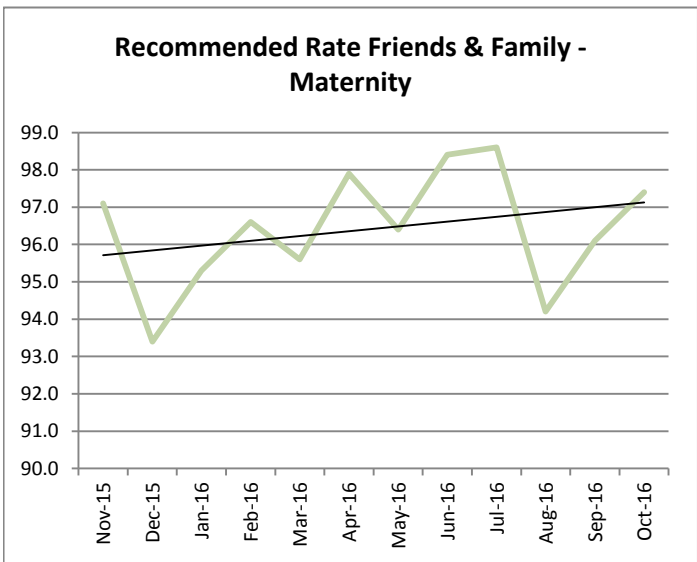
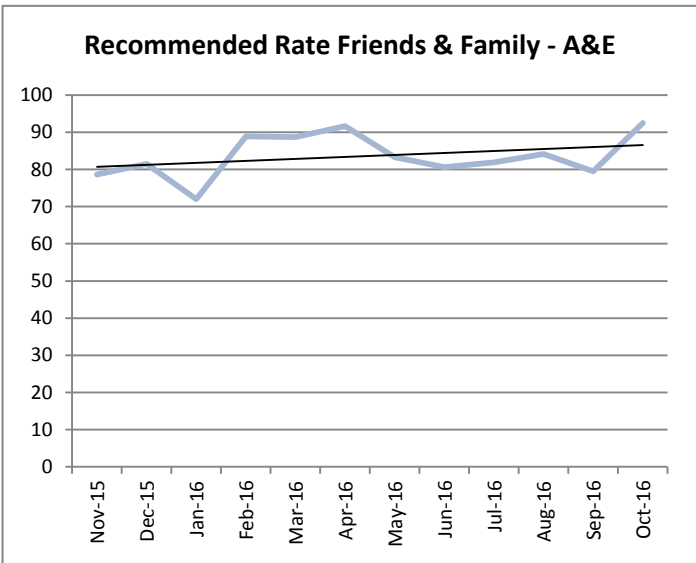
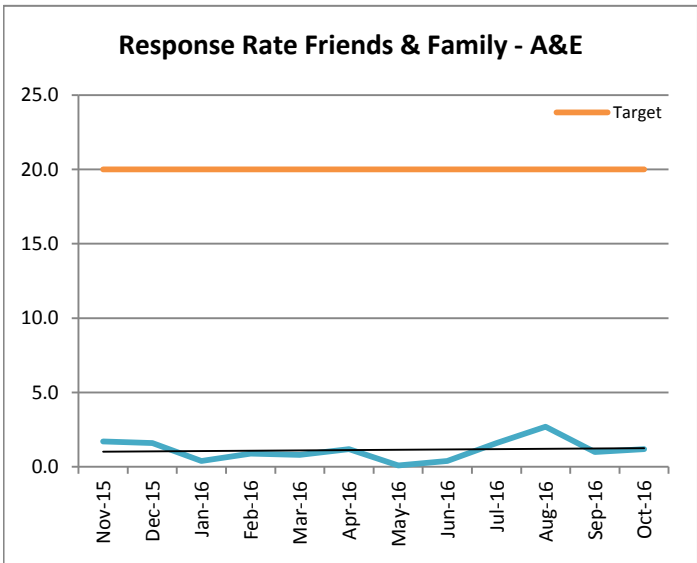
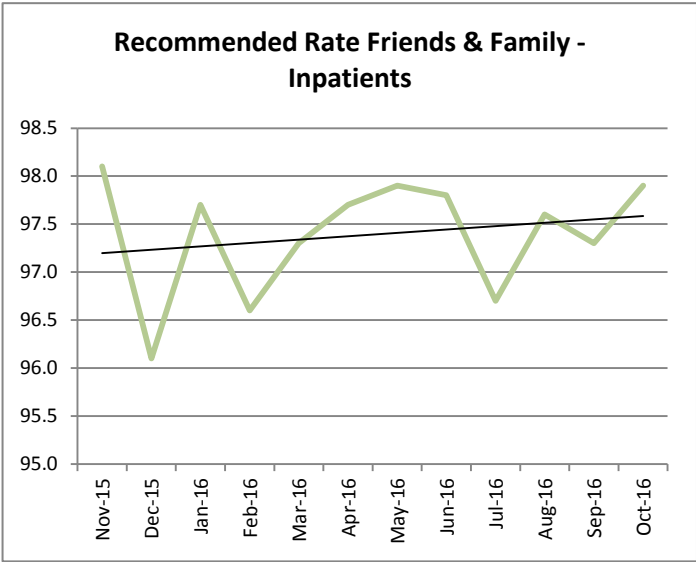
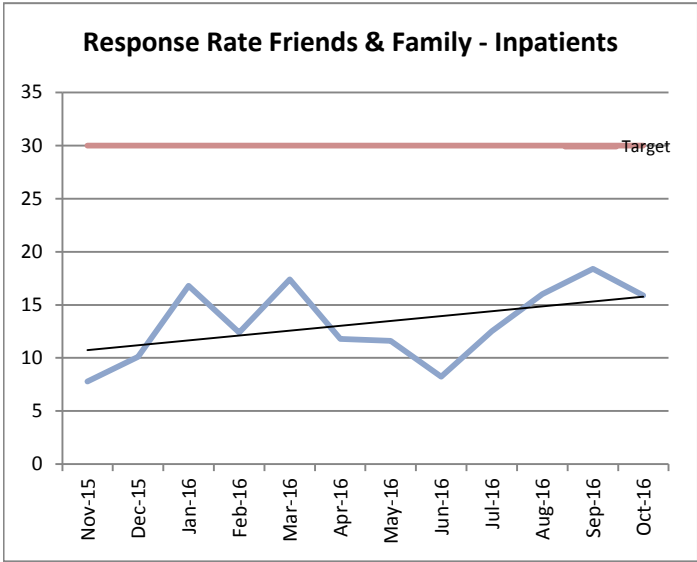


Number of complaints

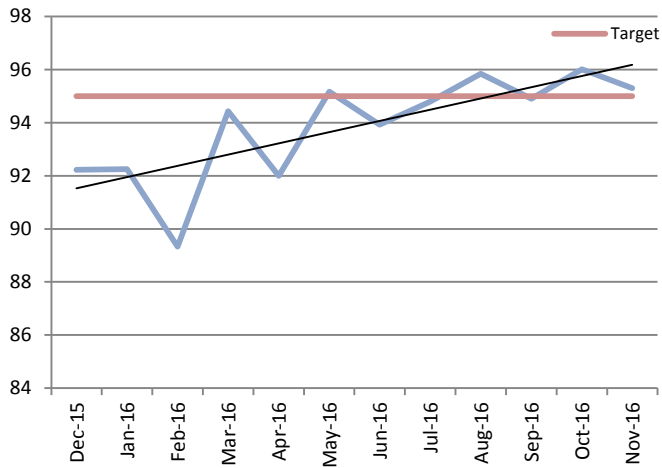


Number of reopened complaints

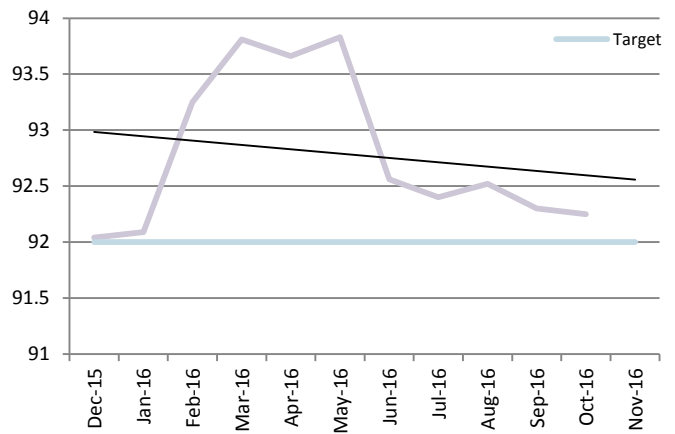




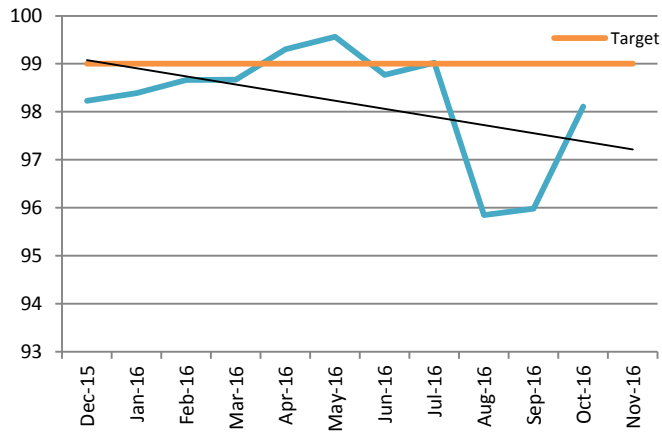
A&E waiting times within 4 hours



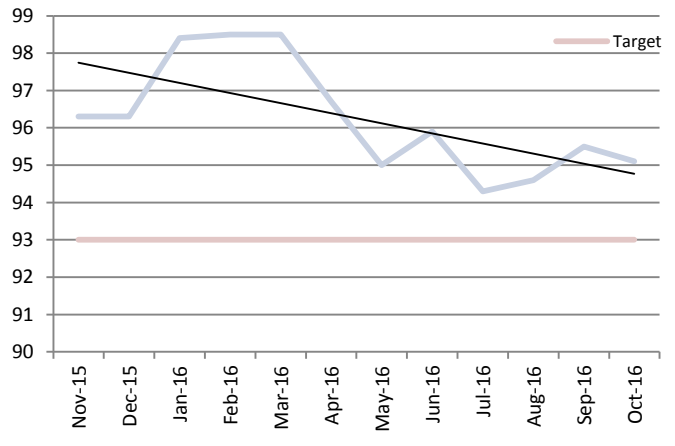
18 week referral to treatment - incomplete pathways



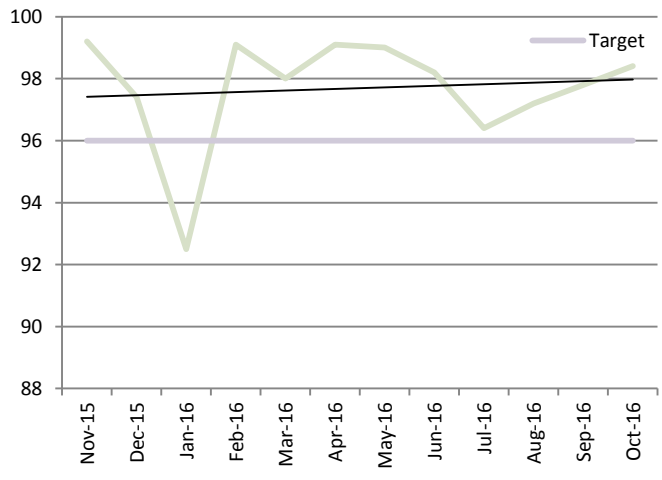
Diagnostic Waiting Times - % within 6 weeks



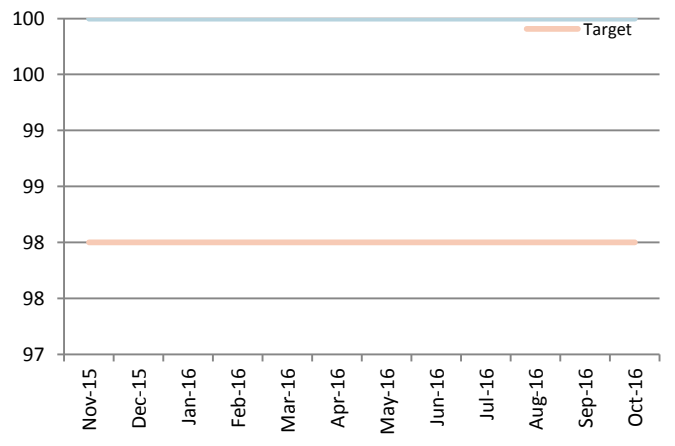
GP Referrals for suspected cancer % within 2 weeks



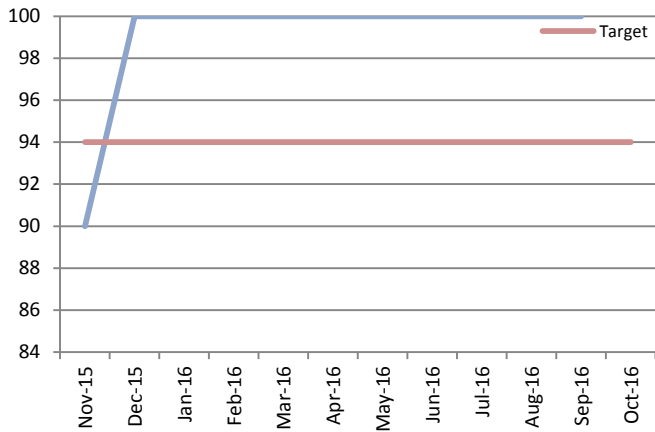
Cancer 31 day diagnosis to treatment



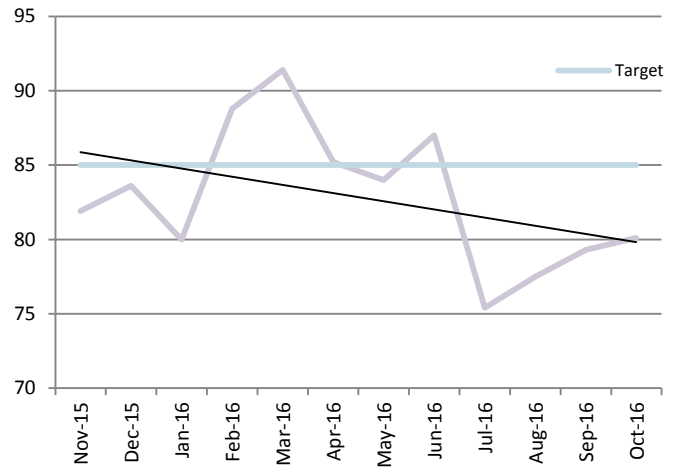
Cancer 31 day second or subsequent treatment (drugs)



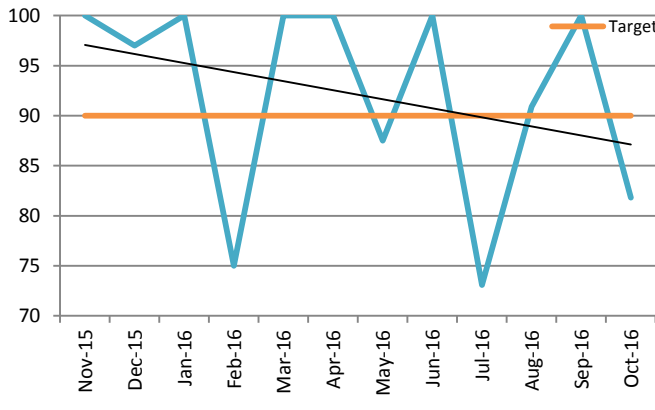
Cancer 31 day second or subsequent treatment (surgery)



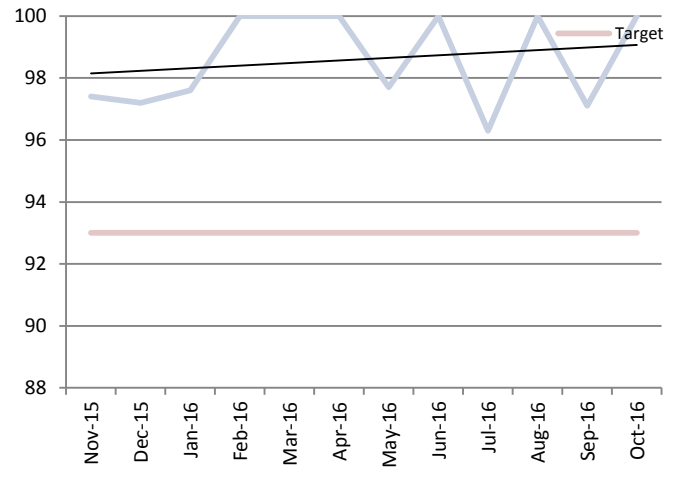
Cancer 62 days urgent referral to treatment



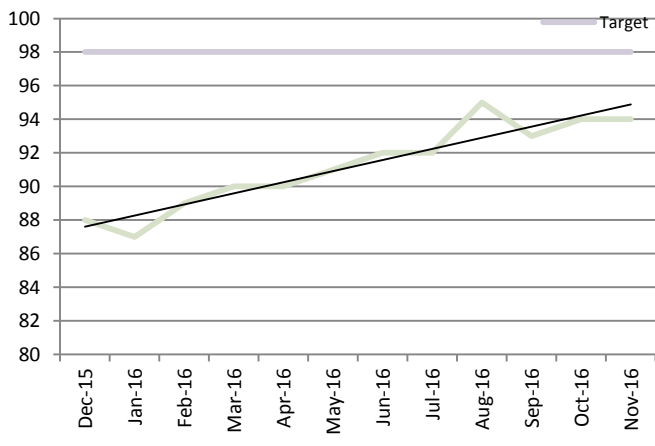
Cancer 62 days referral to treatment from screening



2 week wait - Breast Symptomatic



% eligible staff appraised within the last 12 months



Staff Sickness

