

Board of Directors Scorecard (September 2015)

Performance – Mandatory Access Standards (Executive Lead – Sue Barnett, COO)

Description

Aggregate Position

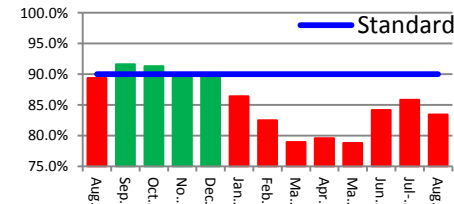
Historical

Variation

RTT Admitted Pathways (D Travis)

Percentage of admitted pathways closed within 18 weeks. The 90% threshold is a Monitor standard.

August performance is 83.44%

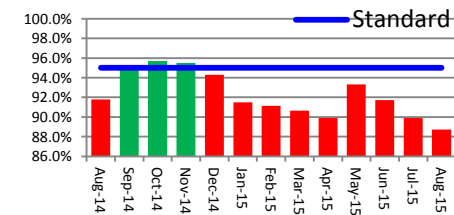


Non achieving specialties include General Surgery, T&O, Urology, Oral Surgery Neurology, Ophthalmology & Gastroenterology. Performance has slipped compared to the recovery trajectories.

RTT Non-Admitted Pathways (D Travis)

Percentage of non-admitted pathways closed within 18 weeks. The 95% threshold is a Monitor standard.

August performance is 88.11%

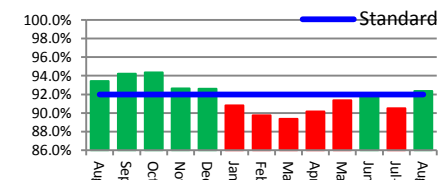


Non achieving specialties include Gen Surgery, Ophthalmology, Gynaecology, Oral Surgery, T&O, Respiratory Medicine, Gastroenterology, Urology, Cardiology & Neurology.

RTT Incomplete Pathways (D Travis)

Percentage of incomplete pathways closed within 18 weeks. The 92% threshold is a Monitor standard.

August performance is 92.35%

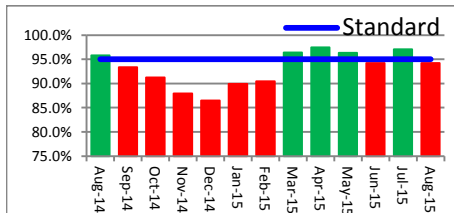


Incomplete performance has improved between July and August (delivery supported by the improvement plan and updated reporting mechanisms which increased the number of patients under 18 weeks in line with expert advice from national HSCIC teams).

A&E 4 hour Standard (A Robinson)

Maximum waiting time of 4 hours in A&E from arrival to admission, transfer or discharge. The 95% threshold is a Monitor standard.

August performance is 94.5%



Performance in August was marginally outside the Monitor standard of 95%