

# Board of Directors Scorecard (July 2015)

Performance – Mandatory Access Standards (Executive Lead – Sue Barnett, COO)

## Description

## Aggregate Position

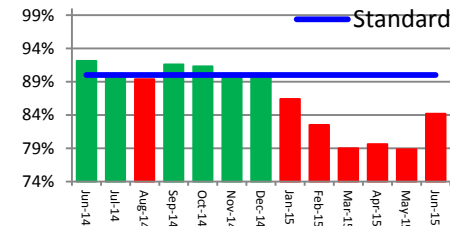
## Historical

## Variation

### RTT Admitted Pathways (D Travis)

Percentage of admitted pathways closed within 18 weeks. The 90% threshold is a Monitor standard.

June performance is 84.19%

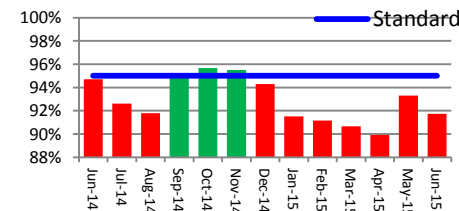


Non achieving specialties include General Surgery, T&O, Urology, Oral Surgery and Other. Performance is in line with recovery trajectories.

### RTT Non-Admitted Pathways (D Travis)

Percentage of non-admitted pathways closed within 18 weeks. The 95% threshold is a Monitor standard.

June performance is 91.73%

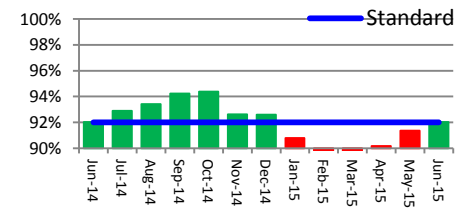


Non achieving specialties include Gen Surgery, Ophthalmology, Gynaecology, Oral Surgery, T&O, Respiratory Medicine, Gastroenterology, Urology, Cardiology & Neurology.

### RTT Incomplete Pathways (D Travis)

Percentage of incomplete pathways closed within 18 weeks. The 92% threshold is a Monitor standard.

June performance is 92.03%

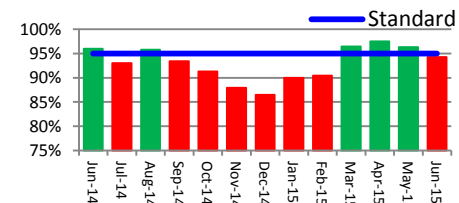


Non achieving specialties include General Surgery, T&O, Urology, Gastroenterology, Oral Surgery and Cardiology. Performance exceeds expectations against agreed recovery plan.

### A&E 4 hour Standard (A Robinson)

Maximum waiting time of 4 hours in A&E from arrival to admission, transfer or discharge. The 95% threshold is a Monitor standard.

June performance is 94.25%



Delivery is under the 95% threshold after 3 consecutive months of being maintained. Early July performance shows a positive recovery.