

Board of Directors Scorecard (July 2015)

Performance – Mandatory Access Standards (Executive Lead – Sue Barnett, COO)

Description

Aggregate Position

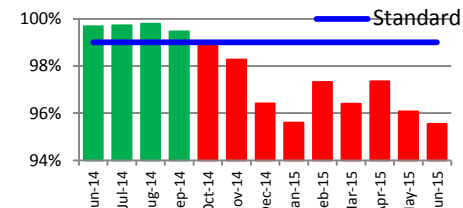
Historical

Variation

Diagnostic 6 week Standard (GMs)

All diagnostic tests need to be carried out within 6 weeks of the request for the test being made. The operational target is 99% or over within 6 weeks.

June performance is 95.5%

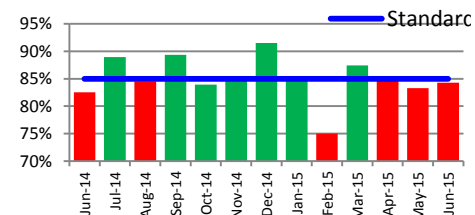


The target continues to perform below the operational standard whilst diagnostic backlogs are cleared. Recovery plans show performance in line with recovery trajectories set.

Cancer 62 Day Standard (D. Gale)

All patients need to receive first treatment for cancer within 62 days of urgent referral. The Monitor threshold is 85%.

June performance is 84.3%

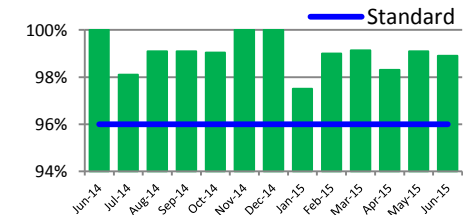


Performance remains below the Monitor standard. An improvement programme is in place led by Cancer Programme Director.

Cancer 31 Day Standard (D. Gale)

All patients to receive first treatment for cancer within 31 days of decision to treat. The Monitor threshold is 96%.

June performance is 98.9%

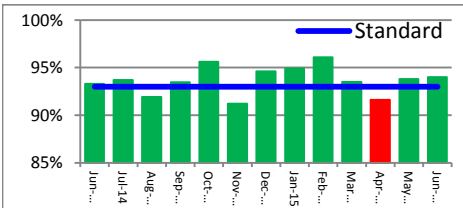


The target continues to be delivered above the Monitor threshold.

Cancer 2 Week Wait Standard (D. Gale)

All patients need to receive first appointment for cancer within 14 days of urgent referral. The Monitor threshold is 93%.

June performance is 94%.



Delivery of threshold has been maintained for the second consecutive month.