

WE HAVE GROWN
WE HAVE DEVELOPED
WE ARE SUCCESSFUL



Research Snapshot

Your inside look into the world of research at SFH

VOLUME 1 ISSUE 2

SPRING EDITION



INSIDE THIS ISSUE

- Meet Pharmacy
- Clinical Trials Day
- Performance
- New Trials
- Study highlight—SALI
- Getting Involved

MEET OUR CLINICAL TRIALS PHARMACY TEAM

Many of the trials undertaken by SFH involve medicines. In Pharmacy we have a team of specialists in who help get the medicines to the patients.

Lynne and Andy manage the supply of medicines through the dispensary

The job is usually straightforward once our instructions are written, but writing them is a tricky task, as every trial is different. We need to make fool proof checklists so nothing can go wrong. A misread code or seemingly small error would give the patient the wrong drug! The only thing that is the same for each trial is the unimaginable amounts of paperwork that we have to keep!

Usually we don't know which medicine the patient is allocated to, but sometimes we are the only ones who do, and we have to keep that a secret until after the trial. At least it makes our job sound exciting when we tell our friends that we crack codes and keep secrets... 😊

Steve Haigh



L-R: Steven Haigh, Lynne Wade, Andrew Boulton

CLINICAL TRIALS DAY

Thursday 16th May 2019

Come and find us in the KTC.

#BEPARTOFRESEARCH

Find out how yesterdays research can shape tomorrows care

The Research Department has helped...

Raise £270 for the Gamma Scanner appeal

Donated goods for the Street Health Event—
Helping the homeless

COMING SOON

Patient Stories

A look into the world of research from a patient perspective.

RESEARCH PERFORMANCE

WOW a massive 2094 participants have been recruited in 18/19, a 22 % increase compared to 17/18, meaning that the annual recruitment target was achieved by **October 2018**.



New Trials

UK ITP Registry in Adults

A database collecting data on patients who have Immune thrombocytopenia

INJUSTIS

A study collecting data over 2 years on patients who have various types of interstitial lung disease

DLB GENETICS

A study collecting genetic data regarding dementia with lewy body for both the patient and carer.

Improving bowel prep for colonoscopy with the use of an educational video

This study uses an educational video instead of the traditional approach of leaflets for patients attending for a colonoscopy.



STUDY HIGHLIGHT— SALI

SALI is the first study to be opened in the ED here at SFH. The study looks for patients with ankle injuries that are Xray negative. It aims to see if there is any link between osteoarthritis and sprains. Patients are identified by the ENP's and referred to the research department.

Thank you to all the ENP's who have got on board with this project with enthusiasm and interest. We currently have a referrer competition in progress ; the ENP who refers the most participants wins a £5 amazon voucher.

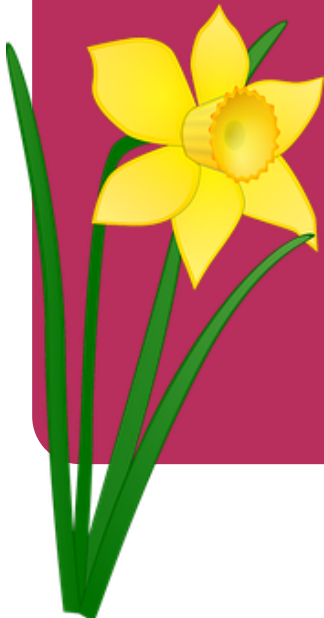
Congratulations to Hayley Shaw who has won for both January and February

(As pictured above, with research nurse Rebecca Boulton)

A FOND FAREWELL TO OUR RESEARCH SECONDEES

Both Cami, RN & Mhairi, Respiratory physiologist have been with the team on a 1 day a week basis for a year now.

Cami says " This role has brought huge benefits to my professional role. I have fully embraced this role which has been very exciting with lots of responsibility; it has been interesting, challenging, rewarding, complex and varied. I will be taking all the knowledge and experience back to my clinical area, sharing and educating other staff members, promote research and its importance"



Want to get involved?

Speak to your research champions to find out which clinical trials and studies and happening in your area now

sfh-tr.researchandinnovation@nhs.net

01623 622515, extension 3990

To find out about clinical research visit: www.iamresearch.co.uk

