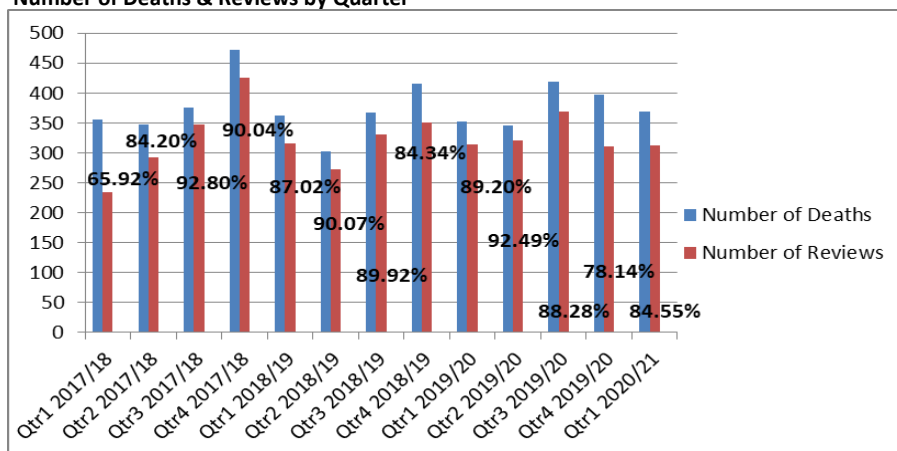


Reporting Learning from Deaths to Board

Learning from Deaths Dashboard Quarter 1 2020/21

Inpatient & Emergency Department Deaths	Total	Reviews completed	% Reviewed	Avoidability Assessments
Apr-20	175	147	84.00%	Not collected
May-20	120	107	89.17%	Not collected
Jun-20	74	58	78.38%	Not collected
Qtr 1	369	312	84.55%	0
Qtr 2			#DIV/0!	
Qtr 3			#DIV/0!	
Qtr 4			#DIV/0!	
Year 20/21	369	312	84.55%	Not collected
Year 19/20	1514	1314	86.79%	41
Year 18/19	1446	1267	87.62%	11
Year 17/18	1550	1300	83.87%	21

Number of Deaths & Reviews by Quarter



Deaths in groups under special focus Qtr 1 2020/21

Group	Total
Learning Disability / Mental Health Patients	Not collected
STEIS SI	1
Internal Investigations	3*
Coroner's investigations open	28
Investigations converted to Inquests	2
Investigations closed without Inquest	1
Coroner's inquests open	23
Concluded Inquests	2

* 1 additional HSIB investigation