



ANNUAL SUMMARY

2019 / 20

This document is a highlights summary of our 2019/20 financial year. You can download the Trust's official full Annual Report and Accounts 2018/19 on our website at www.sfh-tr.nhs.uk/about-us/annual-report-and-accounts/

If you would like to request this document in a different language or format, please contact the Communications Team at Sherwood Forest Hospitals on sfh-tr.communications@nhs.net or **01623 672294**.



Home, Community, Hospital.

#Team
SFH



Annual Report 2019 / 20

Welcome



Welcome to the Annual Summary for the 2019/20 financial year at Sherwood Forest Hospitals NHS Foundation Trust.

This year has been another 12 months of positive progress at Sherwood Forest Hospitals NHS Foundation Trust but quite rightly our memories of 2019/20 will be dominated by the Covid-19 pandemic. Covid-19 has been an unprecedented global incident and we know we will all feel the impact of this for months to come.

Our personal and working lives changed dramatically in March 2020 and we would like to thank Sherwood colleagues, volunteers, patients, the public and partner organisations across health and care for their on-going support as we work together to rebuild our services.

In April 2019, we launched our new strategy "Healthier Communities, Outstanding Care" and this placed a greater emphasis on the mental wellbeing, as well as the physical health, of our colleagues and community. Mental wellbeing and emotional support has been central to our response to Covid.

We have effectively embedded our new strategy over the last 12 months and we are more closely working with health and care partners than before. We have taken the lead role in the Mid-Nottinghamshire Integrated Care Partnership and we continue to be committed to the Nottingham and Nottinghamshire Integrated Care System.

As a provider of care and an employer, we know we can do more to improve but I do think we should take note that the CQC visited us in February and March 2020 and rated Sherwood as Good Overall and Outstanding for Care. All 15 of our services have now been rated Good for Safety. King's Mill Hospital was upgraded to Outstanding Overall and is the first hospital in the East Midlands to be Outstanding and Newark was upgraded to Good Overall. Mansfield Community Hospital was not rated in 2020 so keeps its Good rating.

We are proud of our three hospitals and we look forward to working with colleagues and the community to strengthen them over the coming years. Some of the other achievements we should recognise are:

- Our staff engagement improved again and for the second year in a row we have the best staff engagement across the Midlands. We are now rated ninth in the NHS for staff engagement
- We have made huge improvements in our speaking up agenda across the last 12 months
- We are a research friendly Trust and we continue to recruit more patients to trials than some of the teaching hospitals in the East Midlands
- We are committed to making further improvements but we have made positive steps to improve diversity, equality and inclusion
- Despite increased pressure we continue to provide timely emergency care and compare well to our surrounding trusts
- Our quality and safety metrics continue to improve, and we have not had any patients wait 52 weeks for their treatment for the last 12 months.

We have achieved our financial control total for the fourth year running. Thank you to everyone who has made such a positive contribution in 2019-20.

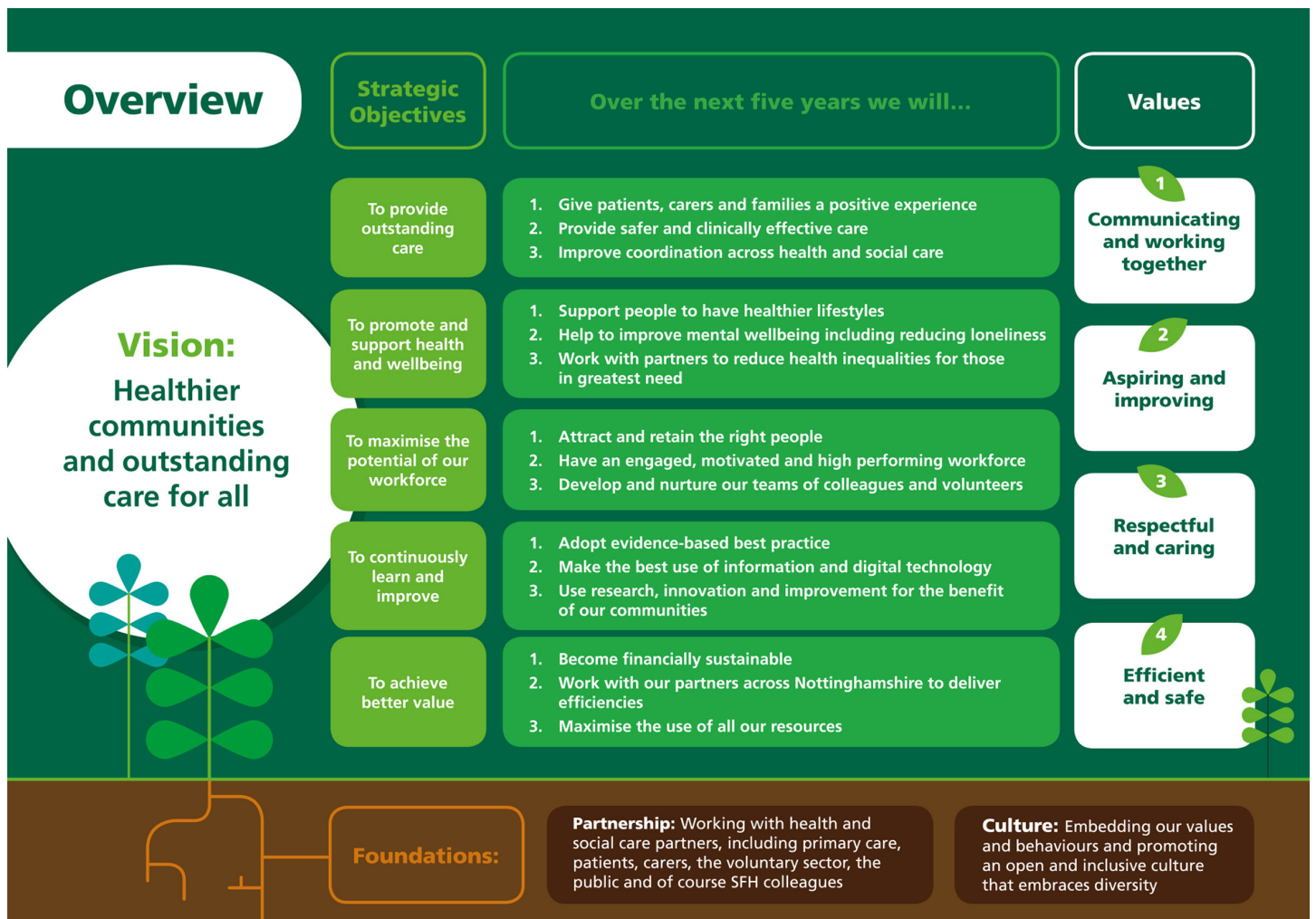
Kind regards

Richard Mitchell CEO | **John MacDonald** Chair

Annual Report 2019 / 20

Strategy Overview

- C Communicating and working together**
We will work as one compassionate and inclusive team, involving, informing and listening to all colleagues and local communities.
- A Aspiring and improving**
We will choose to work or be cared for by Sherwood as we focus on improving patient care and staff well-being.
- R Respectful and caring**
We will show kindness to all, embrace diversity and challenge inappropriate behaviours.
- E Efficient and safe**
We will be consistent and do the right thing at the right time, first time.



Annual Report 2019 / 20

Our Year April 19 to March 20

Overview

Strategic Objectives

- To provide exceptional care
- To protect and support health and wellbeing
- To maximise the efficiency of our resources
- To contribute to the local economy
- To ensure financial resilience

Values

- Communicating and working together
- Aspirational and pioneering
- Respectful and caring
- Efficient and safe

April 2019

In April Sherwood Forest Hospitals celebrated being shortlisted in three categories in the prestigious Health Service Journal (HSJ) Patient Safety Awards. Teams were nominated for the Learning Disabilities Initiative of the Year, Best Partnership Solution Improving Patient Safety and Quality Improvement Initiative of the Year.

1 April 2019 also saw the launch of our new Healthier Communities, Outstanding Care strategy.

May 2019

Staff survey Q4 results showed that 9 out of 10 staff rated the Trust as somewhere to receive good care and 8 out of 10 staff would recommend it as a place to work, **rating us the best Trust in the Midlands for staff engagement.**

Also in May the Trust began working in partnership with Mansfield District Leisure Trust to give patients who are going into hospital for a planned operation the best chance of success by getting fit and healthy. The programme gives patients access to four Mansfield Leisure Centres, including specialised support, gym, swim and classes at a reduced price for up to six months.



June 2019

Our Chief Nurse Awards took place in June and a record 340 nominations were made for nurses across the Trust. Adam Birch, Therapy Assistant on the Integrated Stroke Unit, was named the overall winner at our Chief Nurse Awards 2019.

July 2019

In July, one of our midwives **made the news after delivering her own grandchild** while visiting her son and his partner at their home in Mansfield.



August 2019

Sherwood Forest Hospitals was shortlisted for Trust of the Year in the **annual Health Service Journal Awards.**

September 2019

Our annual Staff Excellence Awards nominations closed with the highest number of nominations ever received.



Annual Report 2019 / 20

Our Year April 19 to March 20



October 2019

Sconce Ward at Newark Hospital was officially opened by John Macdonald on 3 October following full refurbishment. The ward now caters more for dementia patients by having clear pictorial signage on doors, new dementia friendly flooring, better lighting and colour coded areas.

Also in October, patients at King's Mill Hospital's Emergency Department reported that they are some of the most respected patients in the region and are receiving some of the best care and treatment according to the independent Care Quality Commission Urgent and Emergency Care patient survey.

November 2019

November was a month to celebrate as the Street Health Project won a respectable Nursing Times Award in the Integrated Approaches to Care category. The project supports people living on the streets and encourages them to access health care services when they need to. **The Street Health project also won the overall Chair's Awards for Excellence at our annual Staff Excellence Awards.**

November also saw official visits from Prime Minister Boris Johnson and John Ashworth, the Shadow Health Minister.



December 2019

In December a specialist support group was set up for stroke patients at King's Mill Hospital. The patient experience group was set up by staff from the stroke ward and previous stroke patients to help provide hope to both stroke survivors and their families.

January 2020

The Trust was rated above the national average in all areas of the Patient Led Assessment of the Care Environment (PLACE) survey in January. We were rated as one of the cleanest in the country scoring 100% for cleanliness at King's Mill Hospital, 99.3% for Newark Hospital and 99.86% for Mansfield Community Hospital against the national average of 98.06%, alongside high scores for food, privacy, condition appearance, dementia care and disability.



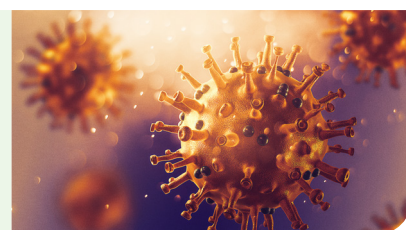
February 2020

A new bleep system was launched to reunite parents with their children following surgery. Parents were given pagers which will bleep once their children are out of theatre so that they can be there to greet them.

The Trust was also rated one of the best performing Trusts in the country for carrying out emergency bowel surgery.

March 2020

The Trust began to experience the impact of the Covid-19 pandemic, implementing plans to care for Covid patients and taking measures to protect colleagues, patients and the community against the spread of the infection. National restrictions were introduced on 26 March to help stop the spread.



Annual Report 2019 / 20

Performance Infographics

Total emergency attendances:
134,943

Four hour emergency care:

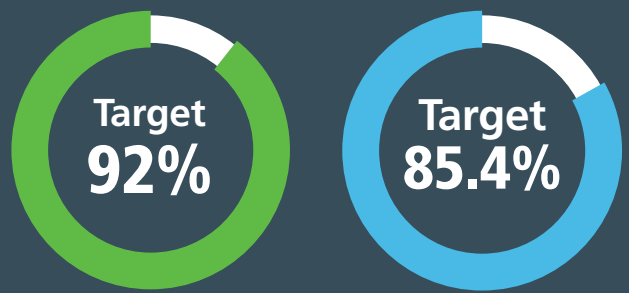


90.09%



EMERGENCY CARE

Referral to treatment <18 weeks



Target 92% **Target 85.4%**

Number of babies delivered 3,271	Number of outpatient appointments 445,792
---	--

Cancer 62 day referral to treatment



77%

Care Quality Commission rating May 2020

King's Mill Hospital



CQC rating

Outstanding ★

Inspected and rated by
14 May 2020



Newark & Mansfield Community Hospitals

CQC rating

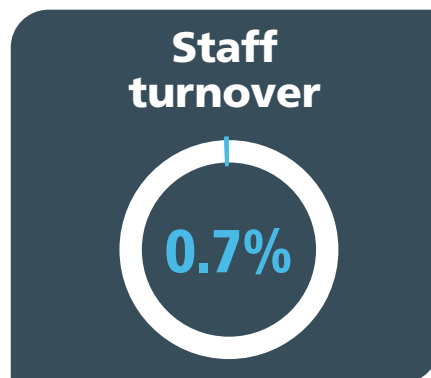
Good

Inspected and rated by
14 May 2020



Annual Report 2019 / 20

Performance Infographics



Healthier Communities,
Outstanding Care

Mid-Nottinghamshire
Integrated Care Partnership



Creating happier, healthier communities together

NHS

Sherwood Forest Hospitals
NHS Foundation Trust

A great place to

belong

- Rated the best NHS Acute Trust in the Midlands, 2018 and 2019 NHS Staff Survey
- King's Mill Hospital is the only CQC rated Outstanding hospital in the East Midlands (Newark and Mansfield Community Hospital are both rated Good)
- CQC Outstanding for the Care we provide
- Working closely with our partners through the Mid Nottinghamshire Integrated Care Partnership to achieve our strategy of Healthier Communities and Outstanding Care.

**We believe we are a great place to work.
We have an exciting future ahead of us
and we would like you to be part of it.**



Find out more at:
**[www.sfh-tr.nhs.uk/
work-for-us](http://www.sfh-tr.nhs.uk/work-for-us)**

**#Team
SFH**