



Research & Innovation

newsletter

Issue five | Spring edition

A very warm WELCOME!

We are delighted to welcome Kerry Evans to the team, as the Lead Clinical Academic for Nurses, Midwives and Allied Health Professionals.

In Kerry's midwifery career she have combined clinical practice and healthcare research. completing a NIHR Masters in research methods in 2010 and was awarded a Wellbeing of Women and RCM Early Career award, followed by a Doctoral Fellowship award in 2017. Since completing her PhD, she has worked as a post-doctoral research associate at the University of Nottingham whilst completing a HEE / NIHR Gold postdoctoral award. In 2020, she was the first midwife to be awarded the HEE / NIHR Clinical Lectureship award.

Kerry's main role is to design, develop, and deliver the vision for Nursing, Midwifery and AHP research. Establishing this as a priority within the Nursing and Midwifery, and AHP strategies in conjunction with the R&I strategy. Helping professionals to deliver academic research whilst working in clinical practice.



Sarah Turner

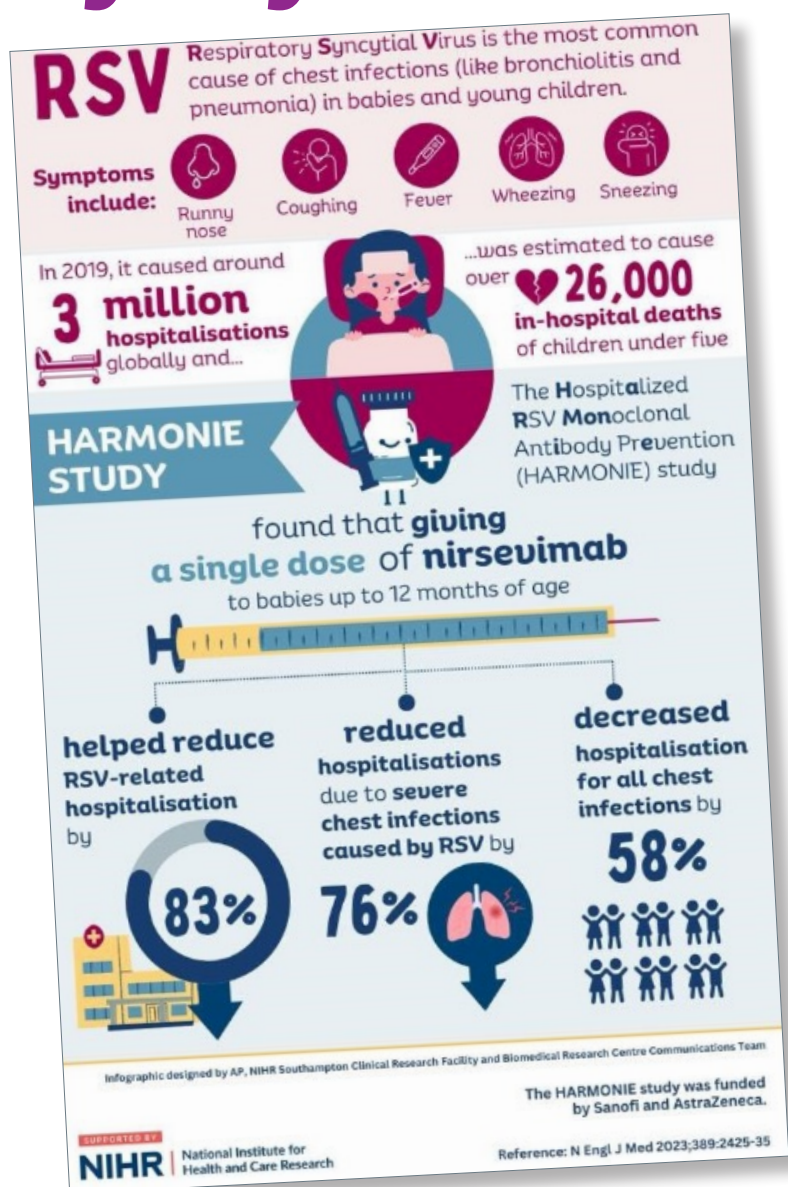
We say a fond farewell to Sarah our Senior Clinical Research Practitioner. Sarah supported the Research and Innovation team in 2020 with the Siren trial during Covid-19. She then accepted a post with us early 2021 and went from strength to strength and progressed to the senior CRP role in 2022. Sarah has been a value member of our team recruiting over 400 patients in her time here making a difference to their future treatments. We wish her every success in new role in the community. She leaves us with this quote:

'I have worked in the research department for just over 3 years and in that time, I have had lots of opportunities to deliver research all over the hospital. I am grateful for all the training I have received, and knowledge passed on by the very experienced research nurses. I am now on to pastures new but will take the new skills and experience with me. I wish the research team the best of luck for the future.'

'I am delighted to be in this role, as a strong advocate for clinical academic careers, helping Sherwood Forest Hospitals deliver the vision of a research active workforce and increase the number of Nurse, Midwife and Allied Health Professional led research projects. If you would like to know more about the opportunities and support available to you, thinking about taking the first steps into a rewarding clinical academic career or considering stepping back onto a clinical academic pathway following a break – please get in touch.' Kerry.evans30@nhs.net



Respiratory syncytial virus



CRN East Midlands Research Award

Congratulations to Sarah our senior Primary Care Research Nurse!

The Mid Nottinghamshire Research Team was recently nominated Sarah for a CRN East Midlands Research Award in the Outstanding Achievement by a Team category by Rachel Illingworth. We are thrilled to hear that your team has been shortlisted as a finalist for this award.

Well done Sarah, we wish you every success!

Respiratory syncytial virus (RSV) is a common seasonal cause of acute lower respiratory tract infection in young children and a leading cause of hospitalization in infants.

Harmonie is a clinical Randomised controlled trial, conducted in France, Germany, and the United Kingdom. The study examined the safety of nirsevimab and the effect of nirsevimab on RSV-associated hospitalizations in infants who were ≤ 12 months of age, had been born at a gestational age of ≥ 29 weeks, were entering their first RSV season, and were not eligible to receive palivizumab.

So far the study has shown that, hospitalization for RSV-associated lower respiratory tract infection occurred in significantly fewer infants in the nirsevimab group 83% than in the standard-care group.

So in conclusion Nirsevimab protected infants against hospitalization for RSV-associated lower respiratory tract infection and against very severe RSV-associated lower respiratory tract infection in conditions that approximated real-world settings.

The study is ongoing and the final results will be published once it has closed and been analysed.

Upcoming events

- International Clinical Trials Day
20th May 9:30-2pm
KTC Kings Mill Hospital
- Research Champion induction training Available on Course booking
- Research champion refresher training Available on Course booking
- Summer fun day event
information to be confirmed.